

## BAB V

### PENUTUP

#### 5.1 Kesimpulan

Berdasarkan hasil penelitian dan pembahasan pada bab sebelumnya, maka dapat ditarik beberapa simpulan sebagai berikut:

1. Secara parsial nilai tukar berpengaruh negatif dan signifikan terhadap harga saham pada Sub Sektor Perbankan *Go Public* selama tahun 2015-2017. Koefisien regresi yakni negatif menunjukkan bahwa ketika kurs semakin tinggi maka akan berdampak pada peningkatan harga saham pada Sub Sektor Perbankan *Go Public* sebab pada saat nilai tukar rupiah melemah maka meningkatkan nilai atau value investasi bank melalui bunga pinjaman baik.
2. Secara parsial tingkat suku bunga berpengaruh negatif dan signifikan terhadap harga saham pada Sub Sektor Perbankan *Go Public* tahun 2015-2017. Koefisien regresi yakni negatif menunjukkan bahwa besarnya tingkat suku bunga maka akan berimbas pada suku bunga kredit bank dimana apabila hal ini semakin besar maka para debitur akan enggan mengajukan kredit yang pada akhirnya akan mempengaruhi laba hingga pada harga saham Sub Sektor Perbankan *Go Public*.
3. Secara simultan Nilai tukar dan tingkat suku bunga berpengaruh signifikan terhadap harga saham pada Sub Sektor Perbankan *Go Public* tahun 2015-2017. Nilai koefisien determinasi  $R^2$  sebesar 0,940696. Nilai ini berarti bahwa sebesar 94,0696% besarnya harga saham Sub Sektor Perbankan *Go Public* dijelaskan oleh nilai tukar dan tingkat suku bunga. Adapun pengaruh dari

variabel lain terhadap harga saham sebesar hanya 5.9304% yakni oleh rasio kinerja keuangan bank. Besarnya pengaruh dari kedua variabel karena kinerja keuangan perbankan pada dasarnya sangat bergantung dari pergerakan kurs dan tingkat suku bunga.

## **5.2 Saran**

Berdasarkan hasil penelitian dan simpulan yang telah diuraikan di atas, maka saran penelitian ini adalah sebagai berikut:

1. Sebaiknya perusahaan perbankan senantiasa menjaga tingkat efisiensi biayanya agar tidak begitu besar meskipun terjadi pergerakan peningkatan nilai tukar rupiah atau dalam hal ini terjadi pelemahan nilai Rupiah.
2. Sebaiknya perusahaan perbankan tidak begitu cepat mengambil keputusan peningkatan dan penurunan suku bunga kredit ketika terjadi pergerakan dari suku bunga Bank Indonesia, hal ini tentunya akan menimbulkan stigma yang kurang baik terutama pada saat terjadi kenaikan suku bunga.
3. Bagi peneliti selanjutnya sebaiknya mengembangkan penelitian ini dengan menambahkan variabel lain yang secara teori dapat memberikan dampak bagi peningkatan harga saham.

## DAFTAR PUSTAKA

- Andriana, Denny. 2015. “*Pengaruh Nilai Tukar Terhadap Harga Saham Setelah Initial Public Offering (IPO)*”. *Jurnal Riset Akuntansi dan Keuangan*, Vol. 3 No.3.
- Anggoro, Tri Susilo. 2011. “*Pengaruh Inflasi, Kurs dan Suku Bunga SBI Terhadap Indeks Harga Saham Gabungan (IHSG) Pada Bursa Efek Indonesia Periode 2005-2009*”. *Skripsi*. Universitas Sebelas Maret.
- Aryanto, Margareta. “*Pengaruh Suku Bunga, Inflasi, Nilai Tukar dan PDB Terhadap Resiko Saham*”.
- Brigham, E,F dan Weston, J,F. 2001. “*Dasar-Dasar Manajemen Keuangan*.” Jakarta: Selemba Empat.
- Bulotio, Yulis. 2014. “*Pengaruh Tingkat Suku Bunga, dan Inflasi Terhadap Harga Saham PT. Bank Mandiri Tbk Periode 2006-2012*”. *Skripsi*. Universitas Negeri Gorontalo.
- Cahya, Putu Fenta Pramudya, I Wayan Suwendra, dan Fridayana Yudiaatmaja. 2015. “*Pengaruh Nilai Tukar Rupiah, dan Inflasi Terhadap Indeks Harga Saham Sektor Properti dan Real Estate yang Tercatat di Bursa Efek Indonesia Tahun 2011-2013*”. *E-Journal Bisma Universitas Pendidikan Ganesha Jurusan Manajemen*, Volume 3.
- Fahmi, Irham. 2014. “*Analisis Laporan Keuangan*”. Bandung: Alfabeta.
- Ginting, Maria Ratna Marisa, Topowijono, dan Sri Sulasmiyati. 2016. “*Pengaruh Tingkat Suku Bunga, Nilai Tukar dan Inflasi Terhadap Harga Saham*”. *Jurnal Administrasi Bisnis*, Vo. 35, No.2.
- Helfert, Erich A. 1997. “*Teknik Analisis Keuangan*”. Jakarta: Erlangga.
- Husnan, Suad. 2008. “*Manajemen Keuangan: Teori dan Penerapan*”. Yogyakarta: BPFE.
- Iba, Zainuddin, dan Aditya Wardhana. 2012. “*Pengaruh Inflasi, Suku Bunga SBI, Nilai Tukar Rupiah Terhadap USD, Profitabilitas, dan Pertumbuhan Aktiva Terhadap Harga Saham Perusahaan Pembiayaan di Bursa Efek Indonesia*”. *Jurnal Kebangsaan*, Vol. 1, No.1.
- Kasmir. 2014. “*Manajemen Perbankan*”. Jakarta: PT RajaGrafindo Persada.
- Krisna, Anak Agung Gde Aditya dan Ni Gusti Putu Wirawati. 2013. “*Pengaruh Inflasi, Nilai Tukar Rupiah, Suku Bunga Indeks SBI Pada Harga Saham Gabungan di BEI*”. *E-Jurnal Akuntansi Universitas Udayana* 3.2.

- Lutfiana, Ilma Mufidatul. 2017. “*Kontribusi Inflasi, Suku Bunga, Kurs, Produk Kosmetik Bruto Terhadap Harga Saham Kelompok Jakarta Islamic Index di Indonesia Periode 2007-2015*”. *Jurnal Kontribusi Inflasi* Vol. 4 No.1
- Manurung, Ria. 2016. “*Pengaruh Inflasi, Suku Bunga dan Kurs Terhadap Indeks Harga Saham Gabungan Pada Bursa Efek Indonesia*”. *Jurnal Ekonomi*, Vol. 19, No.4.
- Munib, Muhammad Fatih. 2016. “*Pengaruh Kurs Rupiah, Inflasi dan BI Rate Terhadap Harga Saham Perusahaan Sektor Perbankan di Bursa Efek Indonesia*”. *Jurnal Administrasi Bisnis* Vol. 4 No.4.
- Murni, Asfia. 2013. “*Ekonomika Makro*. Bandung: Refika Aditama.
- Nurlina. 2017. “*Pengaruh Nilai Tukar dan Suku Bunga Terhadap Harga Saham PT. Bank Rakyat Indonesia Tbk*”. *Jurnal Samudra Ekonomika* Vol. 1 No.1.
- Pilomonu, Sri Wahyuningsih. 2015. “*Pengaruh Tingkat Inflasi dan Tingkat Suku Bunga Bank Indonesia Terhadap Pertumbuhan Saham Perusahaan Makanan dan Minuman yang Terdaftar di Bursa Efek Indonesia Periode 2009-2013*”. *Skripsi*. Universitas Negeri Gorontalo.
- Purnomo, Tri Hendra, dan Nurul Widyawati. 2013. “*Pengaruh Nilai Tukar, Suku Bunga, dan Inflasi Terhadap Return Saham Pada Perusahaan Properti*”. *Jurnal Ilmu dan Riset Manajemen* Vo. 2 No. 10.
- Raharjo, Sugeng. 2010. “*Pengaruh Inflasi, Nilai Kurs Rupiah, dan Tingkat Suku Bunga Terhadap Harga Saham di Bursa Efek Indonesia*”.
- Rianti, Atin. 2015. “*Pengaruh ROE, EPS, Tingkat Bunga SBI, Tingkat Inflasi dan Nilai Tukar Rupiah Terhadap Harga Saham di Bursa Efek Indonesia*”. *Perbanas Review* Volume 1, Nomor 1.
- Saputra, Eri dan Bambang Hadi Santoso. 2017. “*Pengaruh Nilai Tukar Mata Uang, Inflasi, dan Suku Bunga Terhadap Harga Saham Sektor Properti*”. *Jurnal Ilmu dan Riset Manajemen*, Volume 6, Nomor 5.
- Saripudin dan Hilman Lutfi. “*Pengaruh Nilai Tukar Rupiah, Tingkat Suku Bunga SBI, Inflasi dan Volume Transaksi Perdagangan Terhadap Harga Saham Pada Perusahaan Sektor Perbankan di Bursa Efek Indonesia*”.
- Sartono, Agus. 2014. “*Manajemen Keuangan*”: *Teori dan Aplikasi*. Bandung: Alfabeta.
- Setyani, Octavia. 2017. “*Pengaruh Inflasi dan Nilai Tukar Terhadap Indeks Saham Syariah Indonesia*”. *Jurnal Ekonomi Islam*, Volume 8 No.2.
- Singarimbun, Masri, dan Sofian Effendi. 2006. “*Metode Penelitian*” *Survei (Editor)*. Jakarta: LP3ES.

Sukirno, Sadono. 2012. *“Makro Ekonomi Teori Pengantar”*. Jakarta: Rajawali Pers.

Suryanto. *“Pengaruh Inflasi, Suku Bunga BI Rate dan Nilai Tukar Rupiah Terhadap Harga Saham Perusahaan Sektor Properti dan Real Estate di Bursa Efek Indonesia”*.

Suyati, Sri. 2015. *“Pengaruh Inflasi Tingkat Suku Bunga dan Nilai Tukar Rupiah / US Dollar Terhadap Return Saham Properti yang Terdaftar di Bursa Efek Indonesia”*. Jurnal Ilmiah UNTAG Semarang, Vol. 4 No.3.

Usman, M.E.I. 2016. *“Pengaruh Nilai Tukar Rupiah Terhadap Indeks Saham Syariah Indonesia (ISSI)”*. Jurnal EKA CIDA, Vol. 1 No.2.

[www.bi.go.id](http://www.bi.go.id), Bank Indonesia, diakses tanggal 12 Januari 2018.

[www.idx.co.id](http://www.idx.co.id), Bursa Efek Indonesia, diakses tanggal 29 Juni 2018.

**LAMPIRAN 1: DATA PENELITIAN**  
**1. DATA HARGA SAHAM**

BANK	TAHUN	HARGA-SAHAM	LN-HARGA-SAHAM
AGRO	2015-1	100	4.605
AGRO	2015-2	101	4.615
AGRO	2015-3	102	4.625
AGRO	2015-4	98	4.585
AGRO	2015-5	94	4.543
AGRO	2015-6	95	4.554
AGRO	2015-7	90	4.500
AGRO	2015-8	80	4.382
AGRO	2015-9	79	4.369
AGRO	2015-10	101	4.615
AGRO	2015-11	98	4.585
AGRO	2015-12	97	4.575
AGRO	2016-1	92	4.522
AGRO	2016-2	82	4.407
AGRO	2016-3	90	4.500
AGRO	2016-4	167	5.118
AGRO	2016-5	153	5.030
AGRO	2016-6	302	5.710
AGRO	2016-7	416	6.031
AGRO	2016-8	316	5.756
AGRO	2016-9	330	5.799
AGRO	2016-10	290	5.670
AGRO	2016-11	478	6.170
AGRO	2016-12	386	5.956
AGRO	2017-1	486	6.186
AGRO	2017-2	985	6.893
AGRO	2017-3	825	6.715
AGRO	2017-4	805	6.691
AGRO	2017-5	785	6.666
AGRO	2017-6	730	6.593
AGRO	2017-7	600	6.397
AGRO	2017-8	510	6.234
AGRO	2017-9	615	6.422
AGRO	2017-10	535	6.282
AGRO	2017-11	535	6.282
AGRO	2017-12	525	6.263
AGRS	2015-1	133	4.890
AGRS	2015-2	135	4.905
AGRS	2015-3	148	4.997
AGRS	2015-4	135	4.905
AGRS	2015-5	129	4.860
AGRS	2015-6	122	4.804
AGRS	2015-7	92	4.522
AGRS	2015-8	87	4.466
AGRS	2015-9	116	4.754
AGRS	2015-10	39	3.664
AGRS	2015-11	39	3.664
AGRS	2015-12	85	4.443
AGRS	2016-1	92	4.522
AGRS	2016-2	94	4.543
AGRS	2016-3	94	4.543
AGRS	2016-4	98	4.585
AGRS	2016-5	92	4.522
AGRS	2016-6	93	4.533
AGRS	2016-7	95	4.554
AGRS	2016-8	96	4.564
AGRS	2016-9	93	4.533

BANK	TAHUN	HARGA-SAHAM	LN-HARGA-SAHAM
AGRS	2016-10	82	4.407
AGRS	2016-11	93	4.533
AGRS	2016-12	91	4.511
AGRS	2017-1	93	4.533
AGRS	2017-2	109	4.691
AGRS	2017-3	100	4.605
AGRS	2017-4	204	5.318
AGRS	2017-5	170	5.136
AGRS	2017-6	446	6.100
AGRS	2017-7	330	5.799
AGRS	2017-8	258	5.553
AGRS	2017-9	252	5.529
AGRS	2017-10	252	5.529
AGRS	2017-11	252	5.529
AGRS	2017-12	230	5.438
BABP	2015-1	80	4.382
BABP	2015-2	92	4.522
BABP	2015-3	91	4.511
BABP	2015-4	89	4.489
BABP	2015-5	85	4.443
BABP	2015-6	75	4.317
BABP	2015-7	77	4.344
BABP	2015-8	70	4.248
BABP	2015-9	71	4.263
BABP	2015-10	72	4.277
BABP	2015-11	67	4.205
BABP	2015-12	70	4.248
BABP	2016-1	61	4.111
BABP	2016-2	61	4.111
BABP	2016-3	78	4.357
BABP	2016-4	74	4.304
BABP	2016-5	72	4.277
BABP	2016-6	70	4.248
BABP	2016-7	75	4.317
BABP	2016-8	76	4.331
BABP	2016-9	75	4.317
BABP	2016-10	66	4.190
BABP	2016-11	69	4.234
BABP	2016-12	68	4.220
BABP	2017-1	72	4.277
BABP	2017-2	68	4.220
BABP	2017-3	67	4.205
BABP	2017-4	67	4.205
BABP	2017-5	62	4.127
BABP	2017-6	59	4.078
BABP	2017-7	50	3.912
BABP	2017-8	51	3.932
BABP	2017-9	51	3.932
BABP	2017-10	52	3.951
BABP	2017-11	50	3.912
BABP	2017-12	51	3.932
BACA	2015-1	104	4.644
BACA	2015-2	117	4.762
BACA	2015-3	204	5.318
BACA	2015-4	226	5.421
BACA	2015-5	200	5.298
BACA	2015-6	200	5.298
BACA	2015-7	159	5.069
BACA	2015-8	197	5.283

BANK	TAHUN	HARGA-SAHAM	LN-HARGA-SAHAM	BANK	TAHUN	HARGA-SAHAM	LN-HARGA-SAHAM
BACA	2015-9	164	5.100	BBCA	2017-8	18,950	9.850
BACA	2015-10	159	5.069	BBCA	2017-9	20,300	9.918
BACA	2015-11	156	5.050	BBCA	2017-10	20,900	9.948
BACA	2015-12	205	5.323	BBCA	2017-11	20,350	9.921
BACA	2016-1	150	5.011	BBCA	2017-12	21,900	9.994
BACA	2016-2	178	5.182	BBHI	2015-1	0	#NUM!
BACA	2016-3	210	5.347	BBHI	2015-2	0	#NUM!
BACA	2016-4	203	5.313	BBHI	2015-3	0	#NUM!
BACA	2016-5	204	5.318	BBHI	2015-4	0	#NUM!
BACA	2016-6	206	5.328	BBHI	2015-5	0	#NUM!
BACA	2016-7	158	5.063	BBHI	2015-6	0	#NUM!
BACA	2016-8	186	5.226	BBHI	2015-7	0	#NUM!
BACA	2016-9	210	5.347	BBHI	2015-8	177	5.176
BACA	2016-10	195	5.273	BBHI	2015-9	115	4.745
BACA	2016-11	192	5.257	BBHI	2015-10	102	4.625
BACA	2016-12	206	5.328	BBHI	2015-11	125	4.828
BACA	2017-1	204	5.318	BBHI	2015-12	120	4.787
BACA	2017-2	202	5.308	BBHI	2016-1	120	4.787
BACA	2017-3	202	5.308	BBHI	2016-2	119	4.779
BACA	2017-4	200	5.298	BBHI	2016-3	109	4.691
BACA	2017-5	199	5.293	BBHI	2016-4	100	4.605
BACA	2017-6	199	5.293	BBHI	2016-5	100	4.605
BACA	2017-7	200	5.298	BBHI	2016-6	102	4.625
BACA	2017-8	202	5.308	BBHI	2016-7	94	4.543
BACA	2017-9	197	5.283	BBHI	2016-8	96	4.564
BACA	2017-10	220	5.394	BBHI	2016-9	82	4.407
BACA	2017-11	212	5.357	BBHI	2016-10	84	4.431
BACA	2017-12	216	5.375	BBHI	2016-11	74	4.304
BBCA	2015-1	13,375	9.501	BBHI	2016-12	66	4.190
BBCA	2015-2	14,100	9.554	BBHI	2017-1	99	4.595
BBCA	2015-3	14,825	9.604	BBHI	2017-2	90	4.500
BBCA	2015-4	13,475	9.509	BBHI	2017-3	184	5.215
BBCA	2015-5	14,125	9.556	BBHI	2017-4	182	5.204
BBCA	2015-6	13,500	9.510	BBHI	2017-5	104	4.644
BBCA	2015-7	13,100	9.480	BBHI	2017-6	204	5.318
BBCA	2015-8	12,900	9.465	BBHI	2017-7	230	5.438
BBCA	2015-9	12,275	9.415	BBHI	2017-8	152	5.024
BBCA	2015-10	12,900	9.465	BBHI	2017-9	153	5.030
BBCA	2015-11	12,375	9.423	BBHI	2017-10	142	4.956
BBCA	2015-12	13,300	9.496	BBHI	2017-11	128	4.852
BBCA	2016-1	13,100	9.480	BBHI	2017-12	113	4.727
BBCA	2016-2	13,475	9.509	BBKP	2015-1	770	6.646
BBCA	2016-3	13,300	9.496	BBKP	2015-2	795	6.678
BBCA	2016-4	13,050	9.477	BBKP	2015-3	710	6.565
BBCA	2016-5	13,000	9.473	BBKP	2015-4	695	6.544
BBCA	2016-6	13,325	9.497	BBKP	2015-5	720	6.579
BBCA	2016-7	14,450	9.578	BBKP	2015-6	660	6.492
BBCA	2016-8	15,050	9.619	BBKP	2015-7	625	6.438
BBCA	2016-9	15,700	9.661	BBKP	2015-8	680	6.522
BBCA	2016-10	15,525	9.650	BBKP	2015-9	630	6.446
BBCA	2016-11	14,300	9.568	BBKP	2015-10	700	6.551
BBCA	2016-12	15,500	9.649	BBKP	2015-11	680	6.522
BBCA	2017-1	15,300	9.636	BBKP	2015-12	700	6.551
BBCA	2017-2	15,450	9.645	BBKP	2016-1	630	6.446
BBCA	2017-3	16,550	9.714	BBKP	2016-2	545	6.301
BBCA	2017-4	17,750	9.784	BBKP	2016-3	595	6.389
BBCA	2017-5	17,150	9.750	BBKP	2016-4	600	6.397
BBCA	2017-6	18,150	9.806	BBKP	2016-5	535	6.282
BBCA	2017-7	18,700	9.836	BBKP	2016-6	570	6.346

BANK	TAHUN	HARGA-SAHAM	LN-HARGA-SAHAM	BANK	TAHUN	HARGA-SAHAM	LN-HARGA-SAHAM
BBKP	2016-7	615	6.422	BBNI	2015-6	5,300	8.575
BBKP	2016-8	715	6.572	BBNI	2015-7	4,760	8.468
BBKP	2016-9	610	6.413	BBNI	2015-8	4,950	8.507
BBKP	2016-10	690	6.537	BBNI	2015-9	4,135	8.327
BBKP	2016-11	640	6.461	BBNI	2015-10	4,755	8.467
BBKP	2016-12	640	6.461	BBNI	2015-11	4,770	8.470
BBKP	2017-1	610	6.413	BBNI	2015-12	4,990	8.515
BBKP	2017-2	605	6.405	BBNI	2016-1	4,910	8.499
BBKP	2017-3	625	6.438	BBNI	2016-2	5,075	8.532
BBKP	2017-4	630	6.446	BBNI	2016-3	5,200	8.556
BBKP	2017-5	630	6.446	BBNI	2016-4	4,585	8.431
BBKP	2017-6	630	6.446	BBNI	2016-5	4,800	8.476
BBKP	2017-7	595	6.389	BBNI	2016-6	5,200	8.556
BBKP	2017-8	595	6.389	BBNI	2016-7	5,350	8.585
BBKP	2017-9	560	6.328	BBNI	2016-8	5,875	8.678
BBKP	2017-10	555	6.319	BBNI	2016-9	5,550	8.622
BBKP	2017-11	615	6.422	BBNI	2016-10	5,575	8.626
BBKP	2017-12	590	6.380	BBNI	2016-11	5,175	8.552
BBMD	2015-1	1,600	7.378	BBNI	2016-12	5,525	8.617
BBMD	2015-2	1,590	7.371	BBNI	2017-1	5,700	8.648
BBMD	2015-3	1,590	7.371	BBNI	2017-2	6,250	8.740
BBMD	2015-4	1,600	7.378	BBNI	2017-3	6,475	8.776
BBMD	2015-5	1,600	7.378	BBNI	2017-4	6,375	8.760
BBMD	2015-6	1,610	7.384	BBNI	2017-5	6,550	8.787
BBMD	2015-7	1,610	7.384	BBNI	2017-6	6,600	8.795
BBMD	2015-8	1,590	7.371	BBNI	2017-7	7,450	8.916
BBMD	2015-9	1,545	7.343	BBNI	2017-8	7,750	8.955
BBMD	2015-10	1,560	7.352	BBNI	2017-9	7,400	8.909
BBMD	2015-11	1,560	7.352	BBNI	2017-10	7,600	8.936
BBMD	2015-12	1,560	7.352	BBNI	2017-11	8,100	9.000
BBMD	2016-1	1,560	7.352	BBNI	2017-12	9,900	9.200
BBMD	2016-2	1,545	7.343	BBNP	2015-1	2,310	7.745
BBMD	2016-3	1,555	7.349	BBNP	2015-2	2,310	7.745
BBMD	2016-4	1,550	7.346	BBNP	2015-3	2,310	7.745
BBMD	2016-5	1,545	7.343	BBNP	2015-4	2,310	7.745
BBMD	2016-6	1,545	7.343	BBNP	2015-5	2,320	7.749
BBMD	2016-7	1,550	7.346	BBNP	2015-6	2,320	7.749
BBMD	2016-8	1,225	7.111	BBNP	2015-7	2,320	7.749
BBMD	2016-9	1,570	7.359	BBNP	2015-8	2,320	7.749
BBMD	2016-10	1,570	7.359	BBNP	2015-9	2,320	7.749
BBMD	2016-11	1,550	7.346	BBNP	2015-10	1,860	7.528
BBMD	2016-12	1,500	7.313	BBNP	2015-11	1,860	7.528
BBMD	2017-1	1,500	7.313	BBNP	2015-12	1,860	7.528
BBMD	2017-2	1,458	7.285	BBNP	2016-1	1,860	7.528
BBMD	2017-3	1,550	7.346	BBNP	2016-2	1,860	7.528
BBMD	2017-4	1,600	7.378	BBNP	2016-3	1,860	7.528
BBMD	2017-5	1,380	7.230	BBNP	2016-4	1,860	7.528
BBMD	2017-6	1,480	7.300	BBNP	2016-5	1,860	7.528
BBMD	2017-7	1,345	7.204	BBNP	2016-6	1,860	7.528
BBMD	2017-8	1,400	7.244	BBNP	2016-7	1,910	7.555
BBMD	2017-9	1,230	7.115	BBNP	2016-8	1,910	7.555
BBMD	2017-10	1,400	7.244	BBNP	2016-9	1,910	7.555
BBMD	2017-11	1,385	7.233	BBNP	2016-10	1,910	7.555
BBMD	2017-12	1,375	7.226	BBNP	2016-11	1,910	7.555
BBNI	2015-1	6,250	8.740	BBNP	2016-12	1,910	7.555
BBNI	2015-2	6,875	8.836	BBNP	2017-1	1,910	7.555
BBNI	2015-3	7,225	8.885	BBNP	2017-2	1,910	7.555
BBNI	2015-4	6,425	8.768	BBNP	2017-3	1,910	7.555
BBNI	2015-5	6,875	8.836	BBNP	2017-4	1,910	7.555



BANK	TAHUN	HARGA-SAHAM	LN-HARGA-SAHAM	BANK	TAHUN	HARGA-SAHAM	LN-HARGA-SAHAM
BBNP	2017-5	1,450	7.279	BBTN	2016-4	1,760	7.473
BBNP	2017-6	1,450	7.279	BBTN	2016-5	1,705	7.441
BBNP	2017-7	1,450	7.279	BBTN	2016-6	1,715	7.447
BBNP	2017-8	1,450	7.279	BBTN	2016-7	1,975	7.588
BBNP	2017-9	1,450	7.279	BBTN	2016-8	1,210	7.098
BBNP	2017-10	1,450	7.279	BBTN	2016-9	1,920	7.560
BBNP	2017-11	1,450	7.279	BBTN	2016-10	1,910	7.555
BBNP	2017-12	1,450	7.279	BBTN	2016-11	1,650	7.409
BBRI	2015-1	11,675	9.365	BBTN	2016-12	1,740	7.462
BBRI	2015-2	12,875	9.463	BBTN	2017-1	1,905	7.552
BBRI	2015-3	13,275	9.494	BBTN	2017-2	2,140	7.669
BBRI	2015-4	11,625	9.361	BBTN	2017-3	2,270	7.728
BBRI	2015-5	11,775	9.374	BBTN	2017-4	2,300	7.741
BBRI	2015-6	10,350	9.245	BBTN	2017-5	2,500	7.824
BBRI	2015-7	10,000	9.210	BBTN	2017-6	2,600	7.863
BBRI	2015-8	10,625	9.271	BBTN	2017-7	2,600	7.863
BBRI	2015-9	8,650	9.065	BBTN	2017-8	3,010	8.010
BBRI	2015-10	10,525	9.262	BBTN	2017-9	3,150	8.055
BBRI	2015-11	10,775	9.285	BBTN	2017-10	2,760	7.923
BBRI	2015-12	11,425	9.344	BBTN	2017-11	3,200	8.071
BBRI	2016-1	11,225	9.326	BBTN	2017-12	3,570	8.180
BBRI	2016-2	11,075	9.312	BBYB	2015-1	112	4.718
BBRI	2016-3	11,425	9.344	BBYB	2015-2	98	4.585
BBRI	2016-4	10,350	9.245	BBYB	2015-3	93	4.533
BBRI	2016-5	10,350	9.245	BBYB	2015-4	92	4.522
BBRI	2016-6	10,800	9.287	BBYB	2015-5	87	4.466
BBRI	2016-7	11,525	9.352	BBYB	2015-6	85	4.443
BBRI	2016-8	11,650	9.363	BBYB	2015-7	83	4.419
BBRI	2016-9	12,200	9.409	BBYB	2015-8	87	4.466
BBRI	2016-10	12,200	9.409	BBYB	2015-9	89	4.489
BBRI	2016-11	10,900	9.297	BBYB	2015-10	113	4.727
BBRI	2016-12	11,675	9.365	BBYB	2015-11	160	5.075
BBRI	2017-1	11,725	9.369	BBYB	2015-12	386	5.956
BBRI	2017-2	11,950	9.388	BBYB	2016-1	137	4.920
BBRI	2017-3	12,975	9.471	BBYB	2016-2	209	5.342
BBRI	2017-4	12,900	9.465	BBYB	2016-3	210	5.347
BBRI	2017-5	14,475	9.580	BBYB	2016-4	157	5.056
BBRI	2017-6	15,250	9.632	BBYB	2016-5	163	5.094
BBRI	2017-7	14,775	9.601	BBYB	2016-6	170	5.136
BBRI	2017-8	15,125	9.624	BBYB	2016-7	170	5.136
BBRI	2017-9	15,275	9.634	BBYB	2016-8	250	5.521
BBRI	2017-10	15,600	9.655	BBYB	2016-9	292	5.677
BBRI	2017-11	3,210	8.074	BBYB	2016-10	290	5.670
BBRI	2017-12	3,640	8.200	BBYB	2016-11	268	5.591
BBTN	2015-1	995	6.903	BBYB	2016-12	438	6.082
BBTN	2015-2	1,070	6.975	BBYB	2017-1	310	5.737
BBTN	2015-3	1,255	7.135	BBYB	2017-2	288	5.663
BBTN	2015-4	1,115	7.017	BBYB	2017-3	450	6.109
BBTN	2015-5	1,205	7.094	BBYB	2017-4	350	5.858
BBTN	2015-6	1,190	7.082	BBYB	2017-5	320	5.768
BBTN	2015-7	1,170	7.065	BBYB	2017-6	360	5.886
BBTN	2015-8	1,065	6.971	BBYB	2017-7	300	5.704
BBTN	2015-9	995	6.903	BBYB	2017-8	380	5.940
BBTN	2015-10	185	5.220	BBYB	2017-9	350	5.858
BBTN	2015-11	1,270	7.147	BBYB	2017-10	300	5.704
BBTN	2015-12	1,295	7.166	BBYB	2017-11	296	5.690
BBTN	2016-1	1,365	7.219	BBYB	2017-12	400	5.991
BBTN	2016-2	1,660	7.415	BCIC	2015-1	50	3.912
BBTN	2016-3	1,745	7.465	BCIC	2015-2	50	3.912

BANK	TAHUN	HARGA-SAHAM	LN-HARGA-SAHAM	BANK	TAHUN	HARGA-SAHAM	LN-HARGA-SAHAM
BCIC	2015-3	50	3.912	BDMN	2017-2	4,950	8.507
BCIC	2015-4	50	3.912	BDMN	2017-3	4,700	8.455
BCIC	2015-5	50	3.912	BDMN	2017-4	4,860	8.489
BCIC	2015-6	50	3.912	BDMN	2017-5	5,225	8.561
BCIC	2015-7	50	3.912	BDMN	2017-6	5,125	8.542
BCIC	2015-8	50	3.912	BDMN	2017-7	5,700	8.648
BCIC	2015-9	50	3.912	BDMN	2017-8	5,450	8.603
BCIC	2015-10	50	3.912	BDMN	2017-9	5,200	8.556
BCIC	2015-11	50	3.912	BDMN	2017-10	5,100	8.537
BCIC	2015-12	50	3.912	BDMN	2017-11	1,025	6.932
BCIC	2016-1	50	3.912	BDMN	2017-12	6,950	8.846
BCIC	2016-2	50	3.912	BEKS	2015-1	73	4.290
BCIC	2016-3	50	3.912	BEKS	2015-2	70	4.248
BCIC	2016-4	50	3.912	BEKS	2015-3	68	4.220
BCIC	2016-5	50	3.912	BEKS	2015-4	78	4.357
BCIC	2016-6	50	3.912	BEKS	2015-5	76	4.331
BCIC	2016-7	50	3.912	BEKS	2015-6	80	4.382
BCIC	2016-8	50	3.912	BEKS	2015-7	59	4.078
BCIC	2016-9	50	3.912	BEKS	2015-8	55	4.007
BCIC	2016-10	50	3.912	BEKS	2015-9	53	3.970
BCIC	2016-11	50	3.912	BEKS	2015-10	59	4.078
BCIC	2016-12	50	3.912	BEKS	2015-11	58	4.060
BCIC	2017-1	50	3.912	BEKS	2015-12	53	3.970
BCIC	2017-2	50	3.912	BEKS	2016-1	62	4.127
BCIC	2017-3	50	3.912	BEKS	2016-2	95	4.554
BCIC	2017-4	50	3.912	BEKS	2016-3	97	4.575
BCIC	2017-5	50	3.912	BEKS	2016-4	72	4.277
BCIC	2017-6	50	3.912	BEKS	2016-5	72	4.277
BCIC	2017-7	50	3.912	BEKS	2016-6	61	4.111
BCIC	2017-8	50	3.912	BEKS	2016-7	90	4.500
BCIC	2017-9	50	3.912	BEKS	2016-8	60	4.094
BCIC	2017-10	50	3.912	BEKS	2016-9	58	4.060
BCIC	2017-11	50	3.912	BEKS	2016-10	59	4.078
BCIC	2017-12	50	3.912	BEKS	2016-11	81	4.394
BDMN	2015-1	4,400	8.389	BEKS	2016-12	57	4.043
BDMN	2015-2	4,800	8.476	BEKS	2017-1	57	4.043
BDMN	2015-3	5,125	8.542	BEKS	2017-2	56	4.025
BDMN	2015-4	3,970	8.287	BEKS	2017-3	53	3.970
BDMN	2015-5	4,420	8.394	BEKS	2017-4	54	3.989
BDMN	2015-6	4,300	8.366	BEKS	2017-5	50	3.912
BDMN	2015-7	4,200	8.343	BEKS	2017-6	50	3.912
BDMN	2015-8	3,535	8.170	BEKS	2017-7	50	3.912
BDMN	2015-9	2,895	7.971	BEKS	2017-8	50	3.912
BDMN	2015-10	2,760	7.923	BEKS	2017-9	50	3.912
BDMN	2015-11	2,825	7.946	BEKS	2017-10	50	3.912
BDMN	2015-12	3,200	8.071	BEKS	2017-11	50	3.912
BDMN	2016-1	4,060	8.309	BEKS	2017-12	50	3.912
BDMN	2016-2	4,025	8.300	BINA	2015-1	280	5.635
BDMN	2016-3	3,800	8.243	BINA	2015-2	280	5.635
BDMN	2016-4	3,290	8.099	BINA	2015-3	286	5.656
BDMN	2016-5	3,280	8.096	BINA	2015-4	280	5.635
BDMN	2016-6	3,540	8.172	BINA	2015-5	285	5.652
BDMN	2016-7	3,500	8.161	BINA	2015-6	260	5.561
BDMN	2016-8	4,080	8.314	BINA	2015-7	280	5.635
BDMN	2016-9	4,050	8.306	BINA	2015-8	270	5.598
BDMN	2016-10	3,860	8.258	BINA	2015-9	287	5.659
BDMN	2016-11	3,250	8.086	BINA	2015-10	287	5.659
BDMN	2016-12	3,710	8.219	BINA	2015-11	290	5.670
BDMN	2017-1	4,160	8.333	BINA	2015-12	290	5.670

BANK	TAHUN	HARGA-SAHAM	LN-HARGA-SAHAM	BANK	TAHUN	HARGA-SAHAM	LN-HARGA-SAHAM
BINA	2016-1	295	5.687	BJBR	2017-12	2,400	7.783
BINA	2016-2	300	5.704	BJTM	2015-1	520	6.254
BINA	2016-3	295	5.687	BJTM	2015-2	545	6.301
BINA	2016-4	295	5.687	BJTM	2015-3	550	6.310
BINA	2016-5	276	5.620	BJTM	2015-4	482	6.178
BINA	2016-6	300	5.704	BJTM	2015-5	515	6.244
BINA	2016-7	260	5.561	BJTM	2015-6	476	6.165
BINA	2016-8	260	5.561	BJTM	2015-7	465	6.142
BINA	2016-9	228	5.429	BJTM	2015-8	388	5.961
BINA	2016-10	200	5.298	BJTM	2015-9	354	5.869
BINA	2016-11	222	5.403	BJTM	2015-10	433	6.071
BINA	2016-12	244	5.497	BJTM	2015-11	419	6.038
BINA	2017-1	354	5.869	BJTM	2015-12	437	6.080
BINA	2017-2	270	5.598	BJTM	2016-1	540	6.292
BINA	2017-3	1,055	6.961	BJTM	2016-2	414	6.026
BINA	2017-4	1,350	7.208	BJTM	2016-3	475	6.163
BINA	2017-5	1,385	7.233	BJTM	2016-4	460	6.131
BINA	2017-6	1,370	7.223	BJTM	2016-5	444	6.096
BINA	2017-7	1,275	7.151	BJTM	2016-6	510	6.234
BINA	2017-8	1,220	7.107	BJTM	2016-7	585	6.372
BINA	2017-9	1,055	6.961	BJTM	2016-8	600	6.397
BINA	2017-10	985	6.893	BJTM	2016-9	565	6.337
BINA	2017-11	940	6.846	BJTM	2016-10	535	6.282
BINA	2017-12	995	6.903	BJTM	2016-11	505	6.225
BJBR	2015-1	825	6.715	BJTM	2016-12	570	6.346
BJBR	2015-2	980	6.888	BJTM	2017-1	615	6.422
BJBR	2015-3	1,000	6.908	BJTM	2017-2	570	6.346
BJBR	2015-4	875	6.774	BJTM	2017-3	690	6.537
BJBR	2015-5	890	6.791	BJTM	2017-4	685	6.529
BJBR	2015-6	820	6.709	BJTM	2017-5	680	6.522
BJBR	2015-7	805	6.691	BJTM	2017-6	665	6.500
BJBR	2015-8	695	6.544	BJTM	2017-7	630	6.446
BJBR	2015-9	615	6.422	BJTM	2017-8	70	4.248
BJBR	2015-10	755	6.627	BJTM	2017-9	700	6.551
BJBR	2015-11	710	6.565	BJTM	2017-10	695	6.544
BJBR	2015-12	755	6.627	BJTM	2017-11	735	6.600
BJBR	2016-1	870	6.768	BJTM	2017-12	710	6.565
BJBR	2016-2	920	6.824	BKSW	2015-1	420	6.040
BJBR	2016-3	965	6.872	BKSW	2015-2	400	5.991
BJBR	2016-4	940	6.846	BKSW	2015-3	330	5.799
BJBR	2016-5	945	6.851	BKSW	2015-4	745	6.613
BJBR	2016-6	1,125	7.026	BKSW	2015-5	660	6.492
BJBR	2016-7	1,425	7.262	BKSW	2015-6	434	6.073
BJBR	2016-8	1,610	7.384	BKSW	2015-7	380	5.940
BJBR	2016-9	1,610	7.384	BKSW	2015-8	325	5.784
BJBR	2016-10	1,590	7.371	BKSW	2015-9	335	5.814
BJBR	2016-11	1,550	7.346	BKSW	2015-10	329	5.796
BJBR	2016-12	3,390	8.129	BKSW	2015-11	310	5.737
BJBR	2017-1	2,300	7.741	BKSW	2015-12	290	5.670
BJBR	2017-2	2,300	7.741	BKSW	2016-1	298	5.697
BJBR	2017-3	2,020	7.611	BKSW	2016-2	350	5.858
BJBR	2017-4	2,010	7.606	BKSW	2016-3	345	5.844
BJBR	2017-5	2,350	7.762	BKSW	2016-4	348	5.852
BJBR	2017-6	2,010	7.606	BKSW	2016-5	348	5.852
BJBR	2017-7	2,560	7.848	BKSW	2016-6	328	5.793
BJBR	2017-8	2,600	7.863	BKSW	2016-7	406	6.006
BJBR	2017-9	2,450	7.804	BKSW	2016-8	350	5.858
BJBR	2017-10	2,450	7.804	BKSW	2016-9	350	5.858
BJBR	2017-11	2,490	7.820	BKSW	2016-10	346	5.846

BANK	TAHUN	HARGA-SAHAM	LN-HARGA-SAHAM	BANK	TAHUN	HARGA-SAHAM	LN-HARGA-SAHAM
BKSW	2016-11	362	5.892	BMRI	2015-10	8,700	9.071
BKSW	2016-12	320	5.768	BMRI	2015-11	8,500	9.048
BKSW	2017-1	256	5.545	BMRI	2015-12	9,250	9.132
BKSW	2017-2	308	5.730	BMRI	2016-1	9,600	9.170
BKSW	2017-3	390	5.966	BMRI	2016-2	9,550	9.164
BKSW	2017-4	448	6.105	BMRI	2016-3	9,300	9.138
BKSW	2017-5	470	6.153	BMRI	2016-4	9,650	9.175
BKSW	2017-6	450	6.109	BMRI	2016-5	9,025	9.108
BKSW	2017-7	245	5.501	BMRI	2016-6	9,525	9.162
BKSW	2017-8	220	5.394	BMRI	2016-7	10,100	9.220
BKSW	2017-9	216	5.375	BMRI	2016-8	11,225	9.326
BKSW	2017-10	234	5.455	BMRI	2016-9	11,200	9.324
BKSW	2017-11	208	5.338	BMRI	2016-10	11,475	9.348
BKSW	2017-12	240	5.481	BMRI	2016-11	10,500	9.259
BMAS	2015-1	390	5.966	BMRI	2016-12	11,575	9.357
BMAS	2015-2	338	5.823	BMRI	2017-1	10,900	9.297
BMAS	2015-3	338	5.823	BMRI	2017-2	11,300	9.333
BMAS	2015-4	348	5.852	BMRI	2017-3	11,700	9.367
BMAS	2015-5	328	5.793	BMRI	2017-4	11,700	9.367
BMAS	2015-6	328	5.793	BMRI	2017-5	12,600	9.441
BMAS	2015-7	370	5.914	BMRI	2017-6	12,750	9.453
BMAS	2015-8	360	5.886	BMRI	2017-7	13,650	9.521
BMAS	2015-9	350	5.858	BMRI	2017-8	13,100	9.480
BMAS	2015-10	360	5.886	BMRI	2017-9	6,725	8.814
BMAS	2015-11	360	5.886	BMRI	2017-10	7,050	8.861
BMAS	2015-12	400	5.991	BMRI	2017-11	7,400	8.909
BMAS	2016-1	452	6.114	BMRI	2017-12	8,000	8.987
BMAS	2016-2	460	6.131	BNBA	2015-1	163	5.094
BMAS	2016-3	470	6.153	BNBA	2015-2	161	5.081
BMAS	2016-4	405	6.004	BNBA	2015-3	165	5.106
BMAS	2016-5	350	5.858	BNBA	2015-4	154	5.037
BMAS	2016-6	374	5.924	BNBA	2015-5	160	5.075
BMAS	2016-7	304	5.717	BNBA	2015-6	172	5.147
BMAS	2016-8	300	5.704	BNBA	2015-7	173	5.153
BMAS	2016-9	358	5.881	BNBA	2015-8	179	5.187
BMAS	2016-10	380	5.940	BNBA	2015-9	177	5.176
BMAS	2016-11	380	5.940	BNBA	2015-10	175	5.165
BMAS	2016-12	420	6.040	BNBA	2015-11	193	5.263
BMAS	2017-1	400	5.991	BNBA	2015-12	190	5.247
BMAS	2017-2	390	5.966	BNBA	2016-1	183	5.209
BMAS	2017-3	438	6.082	BNBA	2016-2	197	5.283
BMAS	2017-4	420	6.040	BNBA	2016-3	181	5.198
BMAS	2017-5	396	5.981	BNBA	2016-4	191	5.252
BMAS	2017-6	444	6.096	BNBA	2016-5	190	5.247
BMAS	2017-7	398	5.986	BNBA	2016-6	195	5.273
BMAS	2017-8	458	6.127	BNBA	2016-7	199	5.293
BMAS	2017-9	364	5.897	BNBA	2016-8	200	5.298
BMAS	2017-10	358	5.881	BNBA	2016-9	194	5.268
BMAS	2017-11	350	5.858	BNBA	2016-10	199	5.293
BMAS	2017-12	392	5.971	BNBA	2016-11	190	5.247
BMRI	2015-1	11,000	9.306	BNBA	2016-12	200	5.298
BMRI	2015-2	12,000	9.393	BNBA	2017-1	222	5.403
BMRI	2015-3	12,475	9.431	BNBA	2017-2	224	5.412
BMRI	2015-4	10,750	9.283	BNBA	2017-3	236	5.464
BMRI	2015-5	10,775	9.285	BNBA	2017-4	260	5.561
BMRI	2015-6	10,050	9.215	BNBA	2017-5	240	5.481
BMRI	2015-7	9,525	9.162	BNBA	2017-6	260	5.561
BMRI	2015-8	9,100	9.116	BNBA	2017-7	250	5.521
BMRI	2015-9	7,925	8.978	BNBA	2017-8	238	5.472

BANK	TAHUN	HARGA-SAHAM	LN-HARGA-SAHAM	BANK	TAHUN	HARGA-SAHAM	LN-HARGA-SAHAM
BNBA	2017-9	242	5.489	BNII	2016-8	366	5.903
BNBA	2017-10	238	5.472	BNII	2016-9	340	5.829
BNBA	2017-11	268	5.591	BNII	2016-10	366	5.903
BNBA	2017-12	268	5.591	BNII	2016-11	354	5.869
BNGA	2015-1	835	6.727	BNII	2016-12	340	5.829
BNGA	2015-2	795	6.678	BNII	2017-1	352	5.864
BNGA	2015-3	800	6.685	BNII	2017-2	352	5.864
BNGA	2015-4	685	6.529	BNII	2017-3	338	5.823
BNGA	2015-5	720	6.579	BNII	2017-4	340	5.829
BNGA	2015-6	675	6.515	BNII	2017-5	320	5.768
BNGA	2015-7	650	6.477	BNII	2017-6	310	5.737
BNGA	2015-8	447	6.103	BNII	2017-7	314	5.749
BNGA	2015-9	540	6.292	BNII	2017-8	306	5.724
BNGA	2015-10	665	6.500	BNII	2017-9	296	5.690
BNGA	2015-11	695	6.544	BNII	2017-10	304	5.717
BNGA	2015-12	595	6.389	BNII	2017-11	294	5.684
BNGA	2016-1	605	6.405	BNII	2017-12	264	5.576
BNGA	2016-2	570	6.346	BNLI	2015-1	1,550	7.346
BNGA	2016-3	575	6.354	BNLI	2015-2	1,640	7.402
BNGA	2016-4	550	6.310	BNLI	2015-3	1,605	7.381
BNGA	2016-5	495	6.205	BNLI	2015-4	1,610	7.384
BNGA	2016-6	525	6.263	BNLI	2015-5	1,620	7.390
BNGA	2016-7	910	6.813	BNLI	2015-6	1,600	7.378
BNGA	2016-8	835	6.727	BNLI	2015-7	1,550	7.346
BNGA	2016-9	830	6.721	BNLI	2015-8	1,280	7.155
BNGA	2016-10	955	6.862	BNLI	2015-9	1,130	7.030
BNGA	2016-11	805	6.691	BNLI	2015-10	1,100	7.003
BNGA	2016-12	845	6.739	BNLI	2015-11	1,100	7.003
BNGA	2017-1	980	6.888	BNLI	2015-12	945	6.851
BNGA	2017-2	990	6.898	BNLI	2016-1	670	6.507
BNGA	2017-3	1,040	6.947	BNLI	2016-2	630	6.446
BNGA	2017-4	1,270	7.147	BNLI	2016-3	670	6.507
BNGA	2017-5	1,280	7.155	BNLI	2016-4	900	6.802
BNGA	2017-6	1,170	7.065	BNLI	2016-5	585	6.372
BNGA	2017-7	1,290	7.162	BNLI	2016-6	705	6.558
BNGA	2017-8	1,385	7.233	BNLI	2016-7	685	6.529
BNGA	2017-9	1,295	7.166	BNLI	2016-8	660	6.492
BNGA	2017-10	1,240	7.123	BNLI	2016-9	610	6.413
BNGA	2017-11	1,220	7.107	BNLI	2016-10	575	6.354
BNGA	2017-12	1,350	7.208	BNLI	2016-11	555	6.319
BNII	2015-1	203	5.313	BNLI	2016-12	555	6.319
BNII	2015-2	202	5.308	BNLI	2017-1	675	6.515
BNII	2015-3	195	5.273	BNLI	2017-2	700	6.551
BNII	2015-4	194	5.268	BNLI	2017-3	670	6.507
BNII	2015-5	195	5.273	BNLI	2017-4	695	6.544
BNII	2015-6	182	5.204	BNLI	2017-5	685	6.529
BNII	2015-7	190	5.247	BNLI	2017-6	690	6.537
BNII	2015-8	170	5.136	BNLI	2017-7	705	6.558
BNII	2015-9	152	5.024	BNLI	2017-8	720	6.579
BNII	2015-10	165	5.106	BNLI	2017-9	705	6.558
BNII	2015-11	178	5.182	BNLI	2017-10	650	6.477
BNII	2015-12	171	5.142	BNLI	2017-11	620	6.430
BNII	2016-1	162	5.088	BNLI	2017-12	625	6.438
BNII	2016-2	175	5.165	BSIM	2015-1	347	5.849
BNII	2016-3	163	5.094	BSIM	2015-2	393	5.974
BNII	2016-4	213	5.361	BSIM	2015-3	406	6.006
BNII	2016-5	193	5.263	BSIM	2015-4	400	5.991
BNII	2016-6	266	5.583	BSIM	2015-5	385	5.953
BNII	2016-7	410	6.016	BSIM	2015-6	375	5.927

BANK	TAHUN	HARGA-SAHAM	LN-HARGA-SAHAM	BANK	TAHUN	HARGA-SAHAM	LN-HARGA-SAHAM
BSIM	2015-7	385	5.953	BSWD	2017-6	2,200	7.696
BSIM	2015-8	370	5.914	BSWD	2017-7	1,600	7.378
BSIM	2015-9	490	6.194	BSWD	2017-8	1,890	7.544
BSIM	2015-10	485	6.184	BSWD	2017-9	1,600	7.378
BSIM	2015-11	450	6.109	BSWD	2017-10	1,795	7.493
BSIM	2015-12	394	5.976	BSWD	2017-11	1,853	7.525
BSIM	2016-1	430	6.064	BSWD	2017-12	1,735	7.459
BSIM	2016-2	500	6.215	BTPN	2015-1	4,000	8.294
BSIM	2016-3	490	6.194	BTPN	2015-2	4,205	8.344
BSIM	2016-4	405	6.004	BTPN	2015-3	4,220	8.348
BSIM	2016-5	430	6.064	BTPN	2015-4	3,950	8.281
BSIM	2016-6	530	6.273	BTPN	2015-5	3,860	8.258
BSIM	2016-7	800	6.685	BTPN	2015-6	3,425	8.139
BSIM	2016-8	810	6.697	BTPN	2015-7	3,150	8.055
BSIM	2016-9	800	6.685	BTPN	2015-8	2,950	7.990
BSIM	2016-10	870	6.768	BTPN	2015-9	2,910	7.976
BSIM	2016-11	855	6.751	BTPN	2015-10	2,615	7.869
BSIM	2016-12	870	6.768	BTPN	2015-11	2,615	7.869
BSIM	2017-1	860	6.757	BTPN	2015-12	2,400	7.783
BSIM	2017-2	860	6.757	BTPN	2016-1	2,150	7.673
BSIM	2017-3	880	6.780	BTPN	2016-2	2,840	7.952
BSIM	2017-4	865	6.763	BTPN	2016-3	2,800	7.937
BSIM	2017-5	800	6.685	BTPN	2016-4	2,680	7.894
BSIM	2017-6	815	6.703	BTPN	2016-5	2,600	7.863
BSIM	2017-7	850	6.745	BTPN	2016-6	2,470	7.812
BSIM	2017-8	870	6.768	BTPN	2016-7	2,360	7.766
BSIM	2017-9	890	6.791	BTPN	2016-8	2,670	7.890
BSIM	2017-10	900	6.802	BTPN	2016-9	2,560	7.848
BSIM	2017-11	875	6.774	BTPN	2016-10	2,870	7.962
BSIM	2017-12	880	6.780	BTPN	2016-11	2,830	7.948
BSWD	2015-1	2,565	7.850	BTPN	2016-12	2,640	7.879
BSWD	2015-2	2,565	7.850	BTPN	2017-1	2,580	7.856
BSWD	2015-3	5,350	8.585	BTPN	2017-2	2,830	7.948
BSWD	2015-4	3,600	8.189	BTPN	2017-3	2,730	7.912
BSWD	2015-5	2,635	7.877	BTPN	2017-4	2,610	7.867
BSWD	2015-6	1,450	7.279	BTPN	2017-5	2,490	7.820
BSWD	2015-7	2,900	7.972	BTPN	2017-6	2,480	7.816
BSWD	2015-8	3,350	8.117	BTPN	2017-7	2,520	7.832
BSWD	2015-9	4,420	8.394	BTPN	2017-8	2,550	7.844
BSWD	2015-10	4,330	8.373	BTPN	2017-9	2,550	7.844
BSWD	2015-11	3,850	8.256	BTPN	2017-10	2,550	7.844
BSWD	2015-12	3,595	8.187	BTPN	2017-11	2,440	7.800
BSWD	2016-1	3,365	8.121	BTPN	2017-12	2,460	7.808
BSWD	2016-2	3,090	8.036	BVIC	2015-1	120	4.787
BSWD	2016-3	2,890	7.969	BVIC	2015-2	120	4.787
BSWD	2016-4	2,490	7.820	BVIC	2015-3	120	4.787
BSWD	2016-5	2,450	7.804	BVIC	2015-4	118	4.771
BSWD	2016-6	2,240	7.714	BVIC	2015-5	118	4.771
BSWD	2016-7	1,740	7.462	BVIC	2015-6	117	4.762
BSWD	2016-8	2,040	7.621	BVIC	2015-7	115	4.745
BSWD	2016-9	2,080	7.640	BVIC	2015-8	101	4.615
BSWD	2016-10	2,000	7.601	BVIC	2015-9	93	4.533
BSWD	2016-11	1,975	7.588	BVIC	2015-10	112	4.718
BSWD	2016-12	2,050	7.626	BVIC	2015-11	110	4.700
BSWD	2017-1	2,050	7.626	BVIC	2015-12	105	4.654
BSWD	2017-2	2,440	7.800	BVIC	2016-1	105	4.654
BSWD	2017-3	2,340	7.758	BVIC	2016-2	103	4.635
BSWD	2017-4	2,340	7.758	BVIC	2016-3	110	4.700
BSWD	2017-5	1,535	7.336	BVIC	2016-4	102	4.625

BANK	TAHUN	HARGA-SAHAM	LN-HARGA-SAHAM	BANK	TAHUN	HARGA-SAHAM	LN-HARGA-SAHAM
BVIC	2016-5	104	4.644	INPC	2015-4	72	4.277
BVIC	2016-6	103	4.635	INPC	2015-5	78	4.357
BVIC	2016-7	112	4.718	INPC	2015-6	75	4.317
BVIC	2016-8	102	4.625	INPC	2015-7	76	4.331
BVIC	2016-9	99	4.595	INPC	2015-8	67	4.205
BVIC	2016-10	92	4.522	INPC	2015-9	69	4.234
BVIC	2016-11	96	4.564	INPC	2015-10	64	4.159
BVIC	2016-12	107	4.673	INPC	2015-11	67	4.205
BVIC	2017-1	105	4.654	INPC	2015-12	64	4.159
BVIC	2017-2	115	4.745	INPC	2016-1	70	4.248
BVIC	2017-3	113	4.727	INPC	2016-2	69	4.234
BVIC	2017-4	128	4.852	INPC	2016-3	79	4.369
BVIC	2017-5	258	5.553	INPC	2016-4	74	4.304
BVIC	2017-6	294	5.684	INPC	2016-5	74	4.304
BVIC	2017-7	278	5.628	INPC	2016-6	81	4.394
BVIC	2017-8	226	5.421	INPC	2016-7	98	4.585
BVIC	2017-9	204	5.318	INPC	2016-8	98	4.585
BVIC	2017-10	202	5.308	INPC	2016-9	93	4.533
BVIC	2017-11	248	5.513	INPC	2016-10	90	4.500
BVIC	2017-12	236	5.464	INPC	2016-11	110	4.700
DNAR	2015-1	159	5.069	INPC	2016-12	73	4.290
DNAR	2015-2	162	5.088	INPC	2017-1	114	4.736
DNAR	2015-3	160	5.075	INPC	2017-2	108	4.682
DNAR	2015-4	148	4.997	INPC	2017-3	90	4.500
DNAR	2015-5	144	4.970	INPC	2017-4	95	4.554
DNAR	2015-6	128	4.852	INPC	2017-5	96	4.564
DNAR	2015-7	149	5.004	INPC	2017-6	94	4.543
DNAR	2015-8	125	4.828	INPC	2017-7	93	4.533
DNAR	2015-9	126	4.836	INPC	2017-8	90	4.500
DNAR	2015-10	116	4.754	INPC	2017-9	89	4.489
DNAR	2015-11	112	4.718	INPC	2017-10	87	4.466
DNAR	2015-12	113	4.727	INPC	2017-11	94	4.543
DNAR	2016-1	165	5.106	INPC	2017-12	80	4.382
DNAR	2016-2	101	4.615	MAYA	2015-1	1,165	7.060
DNAR	2016-3	122	4.804	MAYA	2015-2	1,650	7.409
DNAR	2016-4	115	4.745	MAYA	2015-3	1,525	7.330
DNAR	2016-5	134	4.898	MAYA	2015-4	1,480	7.300
DNAR	2016-6	145	4.977	MAYA	2015-5	1,570	7.359
DNAR	2016-7	150	5.011	MAYA	2015-6	1,750	7.467
DNAR	2016-8	156	5.050	MAYA	2015-7	1,645	7.405
DNAR	2016-9	155	5.043	MAYA	2015-8	1,645	7.405
DNAR	2016-10	151	5.017	MAYA	2015-9	1,480	7.300
DNAR	2016-11	230	5.438	MAYA	2015-10	1,420	7.258
DNAR	2016-12	240	5.481	MAYA	2015-11	1,930	7.565
DNAR	2017-1	290	5.670	MAYA	2015-12	1,950	7.576
DNAR	2017-2	230	5.438	MAYA	2016-1	1,995	7.598
DNAR	2017-3	316	5.756	MAYA	2016-2	1,865	7.531
DNAR	2017-4	350	5.858	MAYA	2016-3	1,560	7.352
DNAR	2017-5	278	5.628	MAYA	2016-4	1,650	7.409
DNAR	2017-6	284	5.649	MAYA	2016-5	1,670	7.421
DNAR	2017-7	276	5.620	MAYA	2016-6	1,520	7.326
DNAR	2017-8	280	5.635	MAYA	2016-7	1,700	7.438
DNAR	2017-9	280	5.635	MAYA	2016-8	2,220	7.705
DNAR	2017-10	280	5.635	MAYA	2016-9	3	1.047
DNAR	2017-11	272	5.606	MAYA	2016-10	3,150	8.055
DNAR	2017-12	280	5.635	MAYA	2016-11	3,500	8.161
INPC	2015-1	79	4.369	MAYA	2016-12	3,150	8.055
INPC	2015-2	80	4.382	MAYA	2017-1	3,000	8.006
INPC	2015-3	76	4.331	MAYA	2017-2	2,650	7.882



BANK	TAHUN	HARGA-SAHAM	LN-HARGA-SAHAM	BANK	TAHUN	HARGA-SAHAM	LN-HARGA-SAHAM
MAYA	2017-3	2,650	7.882	MEGA	2016-2	2,975	7.998
MAYA	2017-4	2,750	7.919	MEGA	2016-3	2,800	7.937
MAYA	2017-5	2,800	7.937	MEGA	2016-4	2,775	7.928
MAYA	2017-6	3,120	8.046	MEGA	2016-5	3,300	8.102
MAYA	2017-7	3,400	8.132	MEGA	2016-6	3,550	8.175
MAYA	2017-8	3,450	8.146	MEGA	2016-7	3,270	8.093
MAYA	2017-9	3,210	8.074	MEGA	2016-8	3,170	8.061
MAYA	2017-10	3,800	8.243	MEGA	2016-9	3,000	8.006
MAYA	2017-11	3,990	8.292	MEGA	2016-10	3,000	8.006
MAYA	2017-12	3,850	8.256	MEGA	2016-11	2,600	7.863
MCOR	2015-1	223	5.407	MEGA	2016-12	2,550	7.844
MCOR	2015-2	258	5.553	MEGA	2017-1	2,550	7.844
MCOR	2015-3	275	5.617	MEGA	2017-2	2,180	7.687
MCOR	2015-4	274	5.613	MEGA	2017-3	3,000	8.006
MCOR	2015-5	265	5.580	MEGA	2017-4	3,010	8.010
MCOR	2015-6	298	5.697	MEGA	2017-5	3,000	8.006
MCOR	2015-7	276	5.620	MEGA	2017-6	3,000	8.006
MCOR	2015-8	303	5.714	MEGA	2017-7	3,000	8.006
MCOR	2015-9	280	5.635	MEGA	2017-8	2,950	7.990
MCOR	2015-10	349	5.855	MEGA	2017-9	30,000	10.309
MCOR	2015-11	300	5.704	MEGA	2017-10	2,950	7.990
MCOR	2015-12	300	5.704	MEGA	2017-11	2,850	7.955
MCOR	2016-1	295	5.687	MEGA	2017-12	3,340	8.114
MCOR	2016-2	288	5.663	NAGA	2015-1	160	5.075
MCOR	2016-3	289	5.666	NAGA	2015-2	190	5.247
MCOR	2016-4	260	5.561	NAGA	2015-3	190	5.247
MCOR	2016-5	276	5.620	NAGA	2015-4	126	4.836
MCOR	2016-6	200	5.298	NAGA	2015-5	131	4.875
MCOR	2016-7	159	5.069	NAGA	2015-6	144	4.970
MCOR	2016-8	179	5.187	NAGA	2015-7	128	4.852
MCOR	2016-9	193	5.263	NAGA	2015-8	104	4.644
MCOR	2016-10	176	5.170	NAGA	2015-9	110	4.700
MCOR	2016-11	170	5.136	NAGA	2015-10	130	4.868
MCOR	2016-12	148	4.997	NAGA	2015-11	180	5.193
MCOR	2017-1	199	5.293	NAGA	2015-12	212	5.357
MCOR	2017-2	318	5.762	NAGA	2016-1	225	5.416
MCOR	2017-3	294	5.684	NAGA	2016-2	180	5.193
MCOR	2017-4	254	5.537	NAGA	2016-3	180	5.193
MCOR	2017-5	274	5.613	NAGA	2016-4	200	5.298
MCOR	2017-6	274	5.613	NAGA	2016-5	210	5.347
MCOR	2017-7	234	5.455	NAGA	2016-6	192	5.257
MCOR	2017-8	230	5.438	NAGA	2016-7	216	5.375
MCOR	2017-9	206	5.328	NAGA	2016-8	197	5.283
MCOR	2017-10	206	5.328	NAGA	2016-9	202	5.308
MCOR	2017-11	216	5.375	NAGA	2016-10	185	5.220
MCOR	2017-12	214	5.366	NAGA	2016-11	193	5.263
MEGA	2015-1	1,970	7.586	NAGA	2016-12	200	5.298
MEGA	2015-2	1,970	7.586	NAGA	2017-1	151	5.017
MEGA	2015-3	2,450	7.804	NAGA	2017-2	159	5.069
MEGA	2015-4	2,200	7.696	NAGA	2017-3	165	5.106
MEGA	2015-5	2,200	7.696	NAGA	2017-4	174	5.159
MEGA	2015-6	2,500	7.824	NAGA	2017-5	165	5.106
MEGA	2015-7	2,615	7.869	NAGA	2017-6	378	5.935
MEGA	2015-8	3,300	8.102	NAGA	2017-7	234	5.455
MEGA	2015-9	3,450	8.146	NAGA	2017-8	222	5.403
MEGA	2015-10	3,100	8.039	NAGA	2017-9	234	5.455
MEGA	2015-11	3,050	8.023	NAGA	2017-10	228	5.429
MEGA	2015-12	3,275	8.094	NAGA	2017-11	191	5.252
MEGA	2016-1	2,930	7.983	NAGA	2017-12	260	5.561



BANK	TAHUN	HARGA-SAHAM	LN-HARGA-SAHAM	BANK	TAHUN	HARGA-SAHAM	LN-HARGA-SAHAM
NISP	2015-1	1,325	7.189	NOBU	2016-12	760	6.633
NISP	2015-2	1,330	7.193	NOBU	2017-1	835	6.727
NISP	2015-3	1,400	7.244	NOBU	2017-2	895	6.797
NISP	2015-4	1,300	7.170	NOBU	2017-3	890	6.791
NISP	2015-5	1,300	7.170	NOBU	2017-4	910	6.813
NISP	2015-6	1,240	7.123	NOBU	2017-5	910	6.813
NISP	2015-7	1,250	7.131	NOBU	2017-6	900	6.802
NISP	2015-8	1,390	7.237	NOBU	2017-7	880	6.780
NISP	2015-9	1,225	7.111	NOBU	2017-8	875	6.774
NISP	2015-10	1,245	7.127	NOBU	2017-9	890	6.791
NISP	2015-11	1,350	7.208	NOBU	2017-10	905	6.808
NISP	2015-12	1,275	7.151	NOBU	2017-11	925	6.830
NISP	2016-1	1,275	7.151	NOBU	2017-12	960	6.867
NISP	2016-2	1,325	7.189	PNBN	2015-1	1,060	6.966
NISP	2016-3	1,185	7.077	PNBN	2015-2	1,100	7.003
NISP	2016-4	1,335	7.197	PNBN	2015-3	1,425	7.262
NISP	2016-5	1,280	7.155	PNBN	2015-4	1,300	7.170
NISP	2016-6	1,225	7.111	PNBN	2015-5	1,250	7.131
NISP	2016-7	1,315	7.182	PNBN	2015-6	1,100	7.003
NISP	2016-8	1,204	7.093	PNBN	2015-7	1,065	6.971
NISP	2016-9	1,675	7.424	PNBN	2015-8	1,075	6.980
NISP	2016-10	1,690	7.432	PNBN	2015-9	885	6.786
NISP	2016-11	1,750	7.467	PNBN	2015-10	930	6.835
NISP	2016-12	2,070	7.635	PNBN	2015-11	865	6.763
NISP	2017-1	1,810	7.501	PNBN	2015-12	820	6.709
NISP	2017-2	1,810	7.501	PNBN	2016-1	685	6.529
NISP	2017-3	1,870	7.534	PNBN	2016-2	575	6.354
NISP	2017-4	1,800	7.496	PNBN	2016-3	700	6.551
NISP	2017-5	1,750	7.467	PNBN	2016-4	785	6.666
NISP	2017-6	1,800	7.496	PNBN	2016-5	695	6.544
NISP	2017-7	1,900	7.550	PNBN	2016-6	770	6.646
NISP	2017-8	1,875	7.536	PNBN	2016-7	780	6.659
NISP	2017-9	1,865	7.531	PNBN	2016-8	905	6.808
NISP	2017-10	1,916	7.558	PNBN	2016-9	825	6.715
NISP	2017-11	2,000	7.601	PNBN	2016-10	800	6.685
NISP	2017-12	1,875	7.536	PNBN	2016-11	735	6.600
NOBU	2015-1	745	6.613	PNBN	2016-12	750	6.620
NOBU	2015-2	735	6.600	PNBN	2017-1	825	6.715
NOBU	2015-3	815	6.703	PNBN	2017-2	890	6.791
NOBU	2015-4	770	6.646	PNBN	2017-3	905	6.808
NOBU	2015-5	770	6.646	PNBN	2017-4	915	6.819
NOBU	2015-6	750	6.620	PNBN	2017-5	935	6.841
NOBU	2015-7	760	6.633	PNBN	2017-6	975	6.882
NOBU	2015-8	745	6.613	PNBN	2017-7	1,085	6.989
NOBU	2015-9	735	6.600	PNBN	2017-8	1,070	6.975
NOBU	2015-10	715	6.572	PNBN	2017-9	1,140	7.039
NOBU	2015-11	580	6.363	PNBN	2017-10	1,090	6.994
NOBU	2015-12	452	6.114	PNBN	2017-11	1,330	7.193
NOBU	2016-1	600	6.397	PNBN	2017-12	1,140	7.039
NOBU	2016-2	600	6.397	PNBS	2015-1	187	5.231
NOBU	2016-3	498	6.211	PNBS	2015-2	193	5.263
NOBU	2016-4	475	6.163	PNBS	2015-3	223	5.407
NOBU	2016-5	450	6.109	PNBS	2015-4	266	5.583
NOBU	2016-6	446	6.100	PNBS	2015-5	276	5.620
NOBU	2016-7	458	6.127	PNBS	2015-6	265	5.580
NOBU	2016-8	452	6.114	PNBS	2015-7	270	5.598
NOBU	2016-9	448	6.105	PNBS	2015-8	252	5.529
NOBU	2016-10	498	6.211	PNBS	2015-9	224	5.412
NOBU	2016-11	490	6.194	PNBS	2015-10	232	5.447

BANK	TAHUN	HARGA-SAHAM	LN-HARGA-SAHAM	BANK	TAHUN	HARGA-SAHAM	LN-HARGA-SAHAM
PNBS	2015-11	242	5.489	SDRA	2017-10	955	6.862
PNBS	2015-12	250	5.521	SDRA	2017-11	900	6.802
PNBS	2016-1	236	5.464	SDRA	2017-12	890	6.791
PNBS	2016-2	220	5.394				
PNBS	2016-3	218	5.384				
PNBS	2016-4	202	5.308				
PNBS	2016-5	196	5.278				
PNBS	2016-6	210	5.347				
PNBS	2016-7	212	5.357				
PNBS	2016-8	216	5.375				
PNBS	2016-9	199	5.293				
PNBS	2016-10	169	5.130				
PNBS	2016-11	146	4.984				
PNBS	2016-12	120	4.787				
PNBS	2017-1	109	4.691				
PNBS	2017-2	104	4.644				
PNBS	2017-3	113	4.727				
PNBS	2017-4	116	4.754				
PNBS	2017-5	117	4.762				
PNBS	2017-6	140	4.942				
PNBS	2017-7	111	4.710				
PNBS	2017-8	101	4.615				
PNBS	2017-9	100	4.605				
PNBS	2017-10	94	4.543				
PNBS	2017-11	77	4.344				
PNBS	2017-12	65	4.174				
SDRA	2015-1	1,150	7.048				
SDRA	2015-2	1,100	7.003				
SDRA	2015-3	1,150	7.048				
SDRA	2015-4	1,195	7.086				
SDRA	2015-5	1,190	7.082				
SDRA	2015-6	1,195	7.086				
SDRA	2015-7	1,195	7.086				
SDRA	2015-8	1,155	7.052				
SDRA	2015-9	1,190	7.082				
SDRA	2015-10	1,160	7.056				
SDRA	2015-11	1,150	7.048				
SDRA	2015-12	1,100	7.003				
SDRA	2016-1	1,120	7.021				
SDRA	2016-2	1,170	7.065				
SDRA	2016-3	1,200	7.090				
SDRA	2016-4	1,200	7.090				
SDRA	2016-5	950	6.856				
SDRA	2016-6	910	6.813				
SDRA	2016-7	1,150	7.048				
SDRA	2016-8	1,190	7.082				
SDRA	2016-9	1,150	7.048				
SDRA	2016-10	1,150	7.048				
SDRA	2016-11	1,150	7.048				
SDRA	2016-12	1,150	7.048				
SDRA	2017-1	1,150	7.048				
SDRA	2017-2	1,100	7.003				
SDRA	2017-3	1,050	6.957				
SDRA	2017-4	1,050	6.957				
SDRA	2017-5	1,095	6.999				
SDRA	2017-6	1,085	6.989				
SDRA	2017-7	900	6.802				
SDRA	2017-8	800	6.685				
SDRA	2017-9	780	6.659				

## 2. DATA KURS

Nilai	Kurs Jual	Kurs Beli	Tanggal
1	13,616	13,480	30-Des-17
1	13,616	13,480	29-Des-17
1	13,628	13,492	28-Des-17
1	13,630	13,494	27-Des-17
1	13,626	13,490	22-Des-17
1	13,613	13,477	21-Des-17
1	13,647	13,511	20-Des-17
1	13,655	13,519	19-Des-17
1	13,652	13,516	18-Des-17
1	13,641	13,505	15-Des-17
1	13,633	13,497	14-Des-17
1	13,657	13,521	13-Des-17
1	13,618	13,482	12-Des-17
1	13,614	13,478	11-Des-17
1	13,624	13,488	08-Des-17
1	13,620	13,484	07-Des-17
1	13,592	13,456	06-Des-17
1	13,583	13,447	05-Des-17
1	13,595	13,459	04-Des-17
1	13,582	13,446	30-Nop-17
1	13,583	13,447	29-Nop-17
1	13,595	13,459	28-Nop-17
1	13,579	13,443	27-Nop-17
1	13,574	13,438	24-Nop-17
1	13,571	13,435	23-Nop-17
1	13,591	13,455	22-Nop-17
1	13,612	13,476	21-Nop-17
1	13,597	13,461	20-Nop-17
1	13,585	13,449	17-Nop-17
1	13,606	13,470	16-Nop-17
1	13,607	13,471	15-Nop-17
1	13,610	13,474	14-Nop-17
1	13,623	13,487	13-Nop-17
1	13,582	13,446	10-Nop-17
1	13,582	13,446	09-Nop-17
1	13,592	13,456	08-Nop-17
1	13,572	13,436	07-Nop-17
1	13,597	13,461	06-Nop-17
1	13,568	13,432	03-Nop-17
1	13,630	13,494	02-Nop-17
1	13,660	13,524	01-Nop-17
1	13,640	13,504	31-Okt-17
1	13,648	13,512	30-Okt-17
1	13,698	13,562	27-Okt-17
1	13,628	13,492	26-Okt-17
1	13,638	13,502	25-Okt-17
1	13,597	13,461	24-Okt-17
1	13,603	13,467	23-Okt-17
1	13,585	13,449	20-Okt-17
1	13,589	13,453	19-Okt-17
1	13,582	13,446	18-Okt-17
1	13,557	13,423	17-Okt-17
1	13,550	13,416	16-Okt-17
1	13,576	13,440	13-Okt-17
1	13,589	13,453	12-Okt-17
1	13,577	13,441	11-Okt-17
1	13,558	13,424	10-Okt-17
1	13,572	13,436	09-Okt-17
1	13,552	13,418	06-Okt-17
1	13,550	13,416	05-Okt-17
1	13,556	13,422	04-Okt-17
1	13,650	13,514	03-Okt-17
1	13,566	13,432	02-Okt-17
1	13,566	13,432	01-Okt-17
1	13,566	13,432	30-Sep-17
1	13,566	13,432	29-Sep-17
1	13,566	13,432	28-Sep-17
1	13,566	13,432	27-Sep-17
1	13,566	13,432	26-Sep-17
1	13,566	13,432	25-Sep-17
1	13,566	13,432	22-Sep-17
1	13,566	13,432	20-Sep-17
1	13,566	13,432	19-Sep-17
1	13,566	13,432	18-Sep-17
1	13,566	13,432	15-Sep-17
1	13,566	13,432	14-Sep-17
1	13,566	13,432	13-Sep-17
1	13,566	13,432	12-Sep-17
1	13,566	13,432	11-Sep-17
1	13,566	13,432	08-Sep-17
1	13,566	13,432	07-Sep-17
1	13,566	13,432	06-Sep-17
1	13,566	13,432	05-Sep-17
1	13,566	13,432	04-Sep-17
1	13,566	13,432	31-Agust-17
1	13,566	13,432	30-Agust-17
1	13,566	13,432	29-Agust-17
1	13,566	13,432	28-Agust-17
1	13,566	13,432	25-Agust-17
1	13,566	13,432	24-Agust-17
1	13,566	13,432	23-Agust-17
1	13,566	13,432	22-Agust-17
1	13,566	13,432	21-Agust-17
1	13,566	13,432	18-Agust-17
1	13,566	13,432	16-Agust-17
1	13,566	13,432	15-Agust-17
1	13,566	13,432	14-Agust-17
1	13,566	13,432	11-Agust-17
1	13,566	13,432	10-Agust-17
1	13,566	13,432	09-Agust-17
1	13,566	13,432	08-Agust-17
1	13,566	13,432	07-Agust-17
1	13,566	13,432	04-Agust-17
1	13,566	13,432	03-Agust-17
1	13,566	13,432	02-Agust-17
1	13,566	13,432	01-Agust-17
1	13,566	13,432	31-Jul-17
1	13,566	13,432	28-Jul-17
1	13,566	13,432	27-Jul-17
1	13,566	13,432	26-Jul-17
1	13,566	13,432	25-Jul-17
1	13,566	13,432	24-Jul-17
1	13,566	13,432	21-Jul-17
1	13,566	13,432	20-Jul-17
1	13,566	13,432	19-Jul-17
1	13,566	13,432	18-Jul-17
1	13,566	13,432	17-Jul-17
1	13,566	13,432	14-Jul-17
1	13,566	13,432	13-Jul-17
1	13,566	13,432	12-Jul-17
1	13,566	13,432	11-Jul-17
1	13,566	13,432	10-Jul-17
1	13,566	13,432	07-Jul-17
1	13,566	13,432	06-Jul-17
1	13,566	13,432	05-Jul-17
1	13,566	13,432	04-Jul-17
1	13,566	13,432	03-Jul-17

Nilai	Kurs Jual	Kurs Beli	Tanggal	Nilai	Kurs Jual	Kurs Beli	Tanggal
1	13,386	13,252	30-Jun-17	1	13,409	13,275	17-Mar-17
1	13,386	13,252	22-Jun-17	1	13,403	13,269	16-Mar-17
1	13,368	13,234	21-Jun-17	1	13,442	13,308	15-Mar-17
1	13,363	13,231	20-Jun-17	1	13,427	13,293	14-Mar-17
1	13,352	13,220	19-Jun-17	1	13,431	13,297	13-Mar-17
1	13,364	13,232	16-Jun-17	1	13,460	13,326	10-Mar-17
1	13,348	13,216	15-Jun-17	1	13,440	13,306	09-Mar-17
1	13,352	13,220	14-Jun-17	1	13,407	13,273	08-Mar-17
1	13,360	13,228	13-Jun-17	1	13,417	13,283	07-Mar-17
1	13,358	13,226	12-Jun-17	1	13,431	13,297	06-Mar-17
1	13,358	13,226	09-Jun-17	1	13,442	13,308	03-Mar-17
1	13,383	13,249	08-Jun-17	1	13,428	13,294	02-Mar-17
1	13,374	13,240	07-Jun-17	1	13,428	13,294	01-Mar-17
1	13,351	13,219	06-Jun-17	1	13,414	13,280	28-Feb-17
1	13,353	13,221	05-Jun-17	1	13,406	13,272	27-Feb-17
1	13,378	13,244	02-Jun-17	1	13,403	13,269	24-Feb-17
1	13,388	13,254	31-Mei-17	1	13,427	13,293	23-Feb-17
1	13,403	13,269	30-Mei-17	1	13,423	13,289	22-Feb-17
1	13,379	13,245	29-Mei-17	1	13,437	13,303	21-Feb-17
1	13,361	13,229	26-Mei-17	1	13,419	13,285	20-Feb-17
1	13,383	13,249	24-Mei-17	1	13,395	13,261	17-Feb-17
1	13,362	13,230	23-Mei-17	1	13,396	13,262	16-Feb-17
1	13,363	13,231	22-Mei-17	1	13,397	13,263	14-Feb-17
1	13,477	13,343	19-Mei-17	1	13,397	13,263	13-Feb-17
1	13,410	13,276	18-Mei-17	1	13,385	13,251	10-Feb-17
1	13,373	13,239	17-Mei-17	1	13,375	13,241	09-Feb-17
1	13,364	13,232	16-Mei-17	1	13,404	13,270	08-Feb-17
1	13,386	13,252	15-Mei-17	1	13,389	13,255	07-Feb-17
1	13,407	13,273	12-Mei-17	1	13,396	13,262	06-Feb-17
1	13,422	13,288	10-Mei-17	1	13,429	13,295	03-Feb-17
1	13,384	13,250	09-Mei-17	1	13,441	13,307	02-Feb-17
1	13,391	13,257	08-Mei-17	1	13,416	13,282	01-Feb-17
1	13,406	13,272	05-Mei-17	1	13,410	13,276	31-Jan-17
1	13,397	13,263	04-Mei-17	1	13,402	13,268	30-Jan-17
1	13,363	13,231	03-Mei-17	1	13,426	13,292	27-Jan-17
1	13,383	13,249	02-Mei-17	1	13,392	13,258	26-Jan-17
1	13,394	13,260	28-Apr-17	1	13,407	13,273	25-Jan-17
1	13,365	13,233	27-Apr-17	1	13,397	13,263	24-Jan-17
1	13,344	13,212	26-Apr-17	1	13,439	13,305	23-Jan-17
1	13,362	13,230	25-Apr-17	1	13,449	13,315	20-Jan-17
1	13,387	13,253	21-Apr-17	1	13,443	13,309	19-Jan-17
1	13,395	13,261	20-Apr-17	1	13,395	13,261	18-Jan-17
1	13,365	13,233	19-Apr-17	1	13,448	13,314	17-Jan-17
1	13,365	13,233	18-Apr-17	1	13,421	13,287	16-Jan-17
1	13,321	13,189	17-Apr-17	1	13,375	13,241	13-Jan-17
1	13,330	13,198	13-Apr-17	1	13,354	13,222	12-Jan-17
1	13,364	13,232	12-Apr-17	1	13,394	13,260	11-Jan-17
1	13,348	13,216	11-Apr-17	1	13,387	13,253	10-Jan-17
1	13,390	13,256	10-Apr-17	1	13,452	13,318	09-Jan-17
1	13,408	13,274	07-Apr-17	1	13,414	13,280	06-Jan-17
1	13,394	13,260	06-Apr-17	1	13,437	13,303	05-Jan-17
1	13,396	13,262	05-Apr-17	1	13,545	13,411	04-Jan-17
1	13,393	13,259	04-Apr-17	1	13,552	13,418	03-Jan-17
1	13,391	13,257	03-Apr-17	1	13,503	13,369	31-Dec-16
1	13,388	13,254	31-Mar-17	1	13,503	13,369	30-Dec-16
1	13,383	13,249	30-Mar-17	1	13,540	13,406	29-Dec-16
1	13,390	13,256	29-Mar-17	1	13,514	13,380	28-Dec-16
1	13,381	13,247	27-Mar-17	1	13,503	13,369	27-Dec-16
1	13,396	13,262	24-Mar-17	1	13,537	13,403	23-Dec-16
1	13,399	13,265	23-Mar-17	1	13,502	13,368	22-Dec-16
1	13,402	13,268	22-Mar-17	1	13,540	13,406	21-Dec-16
1	13,375	13,241	21-Mar-17	1	13,460	13,326	20-Dec-16
1	13,396	13,262	20-Mar-17	1	13,448	13,314	19-Dec-16

Nilai	Kurs Jual	Kurs Beli	Tanggal	Nilai	Kurs Jual	Kurs Beli	Tanggal
1	13,493	13,359	16-Des-16	1	13,230	13,098	19-Sep-16
1	13,434	13,300	15-Des-16	1	13,197	13,065	16-Sep-16
1	13,351	13,219	14-Des-16	1	13,256	13,124	15-Sep-16
1	13,376	13,242	13-Des-16	1	13,294	13,162	14-Sep-16
1	13,404	13,270	09-Des-16	1	13,217	13,085	13-Sep-16
1	13,371	13,237	08-Des-16	1	13,154	13,024	09-Sep-16
1	13,403	13,269	07-Des-16	1	13,155	13,025	08-Sep-16
1	13,472	13,338	06-Des-16	1	13,151	13,021	07-Sep-16
1	13,584	13,448	05-Des-16	1	13,228	13,096	06-Sep-16
1	13,592	13,456	02-Des-16	1	13,263	13,131	05-Sep-16
1	13,650	13,514	01-Des-16	1	13,327	13,195	02-Sep-16
1	13,631	13,495	30-Nop-16	1	13,335	13,203	01-Sep-16
1	13,617	13,481	29-Nop-16	1	13,367	13,233	31-Agust-16
1	13,534	13,400	28-Nop-16	1	13,326	13,194	30-Agust-16
1	13,638	13,502	25-Nop-16	1	13,341	13,209	29-Agust-16
1	13,608	13,472	24-Nop-16	1	13,308	13,176	26-Agust-16
1	13,540	13,406	23-Nop-16	1	13,333	13,201	25-Agust-16
1	13,491	13,357	22-Nop-16	1	13,318	13,186	24-Agust-16
1	13,505	13,371	21-Nop-16	1	13,282	13,150	23-Agust-16
1	13,475	13,341	18-Nop-16	1	13,263	13,131	22-Agust-16
1	13,452	13,318	17-Nop-16	1	13,185	13,053	19-Agust-16
1	13,414	13,280	16-Nop-16	1	13,180	13,048	18-Agust-16
1	13,405	13,271	15-Nop-16	1	13,163	13,033	16-Agust-16
1	13,425	13,291	14-Nop-16	1	13,187	13,055	15-Agust-16
1	13,417	13,283	11-Nop-16	1	13,186	13,054	12-Agust-16
1	13,184	13,052	10-Nop-16	1	13,179	13,047	11-Agust-16
1	13,149	13,019	09-Nop-16	1	13,189	13,057	10-Agust-16
1	13,155	13,025	08-Nop-16	1	13,199	13,067	09-Agust-16
1	13,147	13,017	07-Nop-16	1	13,210	13,078	08-Agust-16
1	13,169	13,037	04-Nop-16	1	13,191	13,059	05-Agust-16
1	13,115	12,985	03-Nop-16	1	13,204	13,072	04-Agust-16
1	13,123	12,993	02-Nop-16	1	13,180	13,048	03-Agust-16
1	13,101	12,971	01-Nop-16	1	13,144	13,014	02-Agust-16
1	13,116	12,986	31-Okt-16	1	13,145	13,015	01-Agust-16
1	13,113	12,983	28-Okt-16	1	13,159	13,029	29-Jul-16
1	13,092	12,962	27-Okt-16	1	13,179	13,047	28-Jul-16
1	13,062	12,932	26-Okt-16	1	13,196	13,064	27-Jul-16
1	13,087	12,957	25-Okt-16	1	13,216	13,084	26-Jul-16
1	13,112	12,982	24-Okt-16	1	13,201	13,069	25-Jul-16
1	13,085	12,955	21-Okt-16	1	13,168	13,036	22-Jul-16
1	13,064	12,934	20-Okt-16	1	13,188	13,056	21-Jul-16
1	13,072	12,942	19-Okt-16	1	13,166	13,034	20-Jul-16
1	13,109	12,979	18-Okt-16	1	13,151	13,021	19-Jul-16
1	13,119	12,989	17-Okt-16	1	13,178	13,046	18-Jul-16
1	13,112	12,982	14-Okt-16	1	13,151	13,021	15-Jul-16
1	13,093	12,963	13-Okt-16	1	13,153	13,023	14-Jul-16
1	13,088	12,958	12-Okt-16	1	13,160	13,030	13-Jul-16
1	13,057	12,927	11-Okt-16	1	13,217	13,085	12-Jul-16
1	13,034	12,904	10-Okt-16	1	13,178	13,046	11-Jul-16
1	13,067	12,937	07-Okt-16	1	13,238	13,106	04-Jul-16
1	13,057	12,927	06-Okt-16	1	13,238	13,106	01-Jul-16
1	13,060	12,930	05-Okt-16	1	13,246	13,114	30-Jun-16
1	13,053	12,923	04-Okt-16	1	13,232	13,100	29-Jun-16
1	13,075	12,945	03-Okt-16	1	13,322	13,190	28-Jun-16
1	13,063	12,933	30-Sep-16	1	13,562	13,428	27-Jun-16
1	13,017	12,887	29-Sep-16	1	13,362	13,230	24-Jun-16
1	12,991	12,861	28-Sep-16	1	13,331	13,199	23-Jun-16
1	13,092	12,962	27-Sep-16	1	13,364	13,232	22-Jun-16
1	13,141	13,011	26-Sep-16	1	13,352	13,220	21-Jun-16
1	13,163	13,033	23-Sep-16	1	13,326	13,194	20-Jun-16
1	13,163	13,033	22-Sep-16	1	13,425	13,291	17-Jun-16
1	13,214	13,082	21-Sep-16	1	13,394	13,260	16-Jun-16
1	13,208	13,076	20-Sep-16	1	13,465	13,331	15-Jun-16

Nilai	Kurs Jual	Kurs Beli	Tanggal	Nilai	Kurs Jual	Kurs Beli	Tanggal
1	13,339	13,207	14-Jun-16	1	13,085	12,955	14-Mar-16
1	13,408	13,274	13-Jun-16	1	13,152	13,022	11-Mar-16
1	13,376	13,242	10-Jun-16	1	13,215	13,083	10-Mar-16
1	13,297	13,165	09-Jun-16	1	13,194	13,062	08-Mar-16
1	13,307	13,175	08-Jun-16	1	13,094	12,964	07-Mar-16
1	13,442	13,308	07-Jun-16	1	13,225	13,093	04-Mar-16
1	13,545	13,411	06-Jun-16	1	13,326	13,194	03-Mar-16
1	13,680	13,544	03-Jun-16	1	13,381	13,247	02-Mar-16
1	13,763	13,627	02-Jun-16	1	13,434	13,300	01-Mar-16
1	13,739	13,603	01-Jun-16	1	13,462	13,328	29-Feb-16
1	13,683	13,547	31-Mei-16	1	13,467	13,333	26-Feb-16
1	13,709	13,573	30-Mei-16	1	13,483	13,349	25-Feb-16
1	13,643	13,507	27-Mei-16	1	13,513	13,379	24-Feb-16
1	13,683	13,547	26-Mei-16	1	13,464	13,330	23-Feb-16
1	13,739	13,603	25-Mei-16	1	13,527	13,393	22-Feb-16
1	13,674	13,538	24-Mei-16	1	13,617	13,481	19-Feb-16
1	13,675	13,539	23-Mei-16	1	13,546	13,412	18-Feb-16
1	13,641	13,505	20-Mei-16	1	13,572	13,436	17-Feb-16
1	13,534	13,400	19-Mei-16	1	13,400	13,266	16-Feb-16
1	13,386	13,252	18-Mei-16	1	13,543	13,409	15-Feb-16
1	13,344	13,212	17-Mei-16	1	13,538	13,404	12-Feb-16
1	13,395	13,261	16-Mei-16	1	13,436	13,302	11-Feb-16
1	13,378	13,244	13-Mei-16	1	13,606	13,470	10-Feb-16
1	13,365	13,233	12-Mei-16	1	13,757	13,621	09-Feb-16
1	13,337	13,205	11-Mei-16	1	13,721	13,585	05-Feb-16
1	13,400	13,266	10-Mei-16	1	13,730	13,594	04-Feb-16
1	13,350	13,218	09-Mei-16	1	13,826	13,688	03-Feb-16
1	13,312	13,180	04-Mei-16	1	13,689	13,553	02-Feb-16
1	13,228	13,096	03-Mei-16	1	13,767	13,631	01-Feb-16
1	13,258	13,126	02-Mei-16	1	13,915	13,777	29-Jan-16
1	13,270	13,138	29-Apr-16	1	13,958	13,820	28-Jan-16
1	13,270	13,138	28-Apr-16	1	13,940	13,802	27-Jan-16
1	13,239	13,107	27-Apr-16	1	13,974	13,834	26-Jan-16
1	13,281	13,149	26-Apr-16	1	13,913	13,775	25-Jan-16
1	13,301	13,169	25-Apr-16	1	13,943	13,805	22-Jan-16
1	13,235	13,103	22-Apr-16	1	13,968	13,830	21-Jan-16
1	13,248	13,116	21-Apr-16	1	13,965	13,827	20-Jan-16
1	13,199	13,067	20-Apr-16	1	13,991	13,851	19-Jan-16
1	13,216	13,084	19-Apr-16	1	14,001	13,861	18-Jan-16
1	13,270	13,138	18-Apr-16	1	13,955	13,817	15-Jan-16
1	13,232	13,100	15-Apr-16	1	13,946	13,808	14-Jan-16
1	13,304	13,172	14-Apr-16	1	13,930	13,792	13-Jan-16
1	13,161	13,031	13-Apr-16	1	13,904	13,766	12-Jan-16
1	13,189	13,057	12-Apr-16	1	14,005	13,865	11-Jan-16
1	13,200	13,068	11-Apr-16	1	13,943	13,805	08-Jan-16
1	13,235	13,103	08-Apr-16	1	14,016	13,876	07-Jan-16
1	13,263	13,131	07-Apr-16	1	13,932	13,794	06-Jan-16
1	13,289	13,157	06-Apr-16	1	14,001	13,861	05-Jan-16
1	13,283	13,151	05-Apr-16	1	13,967	13,829	04-Jan-16
1	13,211	13,079	04-Apr-16	1	13,864	13,726	31-Dec-15
1	13,266	13,134	01-Apr-16	1	13,863	13,725	30-Dec-15
1	13,342	13,210	31-Mar-16	1	13,726	13,590	29-Dec-15
1	13,426	13,292	30-Mar-16	1	13,707	13,571	28-Dec-15
1	13,430	13,296	29-Mar-16	1	13,712	13,576	23-Dec-15
1	13,390	13,256	28-Mar-16	1	13,683	13,547	22-Dec-15
1	13,316	13,184	24-Mar-16	1	13,941	13,803	21-Dec-15
1	13,233	13,101	23-Mar-16	1	14,102	13,962	18-Dec-15
1	13,241	13,109	22-Mar-16	1	14,098	13,958	17-Dec-15
1	13,226	13,094	21-Mar-16	1	14,120	13,980	16-Dec-15
1	13,113	12,983	18-Mar-16	1	14,135	13,995	15-Dec-15
1	13,232	13,100	17-Mar-16	1	14,146	14,006	14-Dec-15
1	13,235	13,103	16-Mar-16	1	14,007	13,867	11-Dec-15
1	13,152	13,022	15-Mar-16	1	14,024	13,884	10-Dec-15

Nilai	Kurs Jual	Kurs Beli	Tanggal	Nilai	Kurs Jual	Kurs Beli	Tanggal
1	13,922	13,784	08-Des-15	1	14,356	14,214	08-Sep-15
1	13,906	13,768	07-Des-15	1	14,305	14,163	07-Sep-15
1	13,902	13,764	04-Des-15	1	14,249	14,107	04-Sep-15
1	13,914	13,776	03-Des-15	1	14,231	14,089	03-Sep-15
1	13,826	13,688	02-Des-15	1	14,198	14,056	02-Sep-15
1	13,877	13,739	01-Des-15	1	14,151	14,011	01-Sep-15
1	13,909	13,771	30-Nop-15	1	14,097	13,957	31-Agust-15
1	13,816	13,678	27-Nop-15	1	14,081	13,941	28-Agust-15
1	13,802	13,664	26-Nop-15	1	14,199	14,057	27-Agust-15
1	13,741	13,605	25-Nop-15	1	14,173	14,031	26-Agust-15
1	13,792	13,654	24-Nop-15	1	14,137	13,997	25-Agust-15
1	13,764	13,628	23-Nop-15	1	14,068	13,928	24-Agust-15
1	13,808	13,670	20-Nop-15	1	13,964	13,826	21-Agust-15
1	13,856	13,718	19-Nop-15	1	13,907	13,769	20-Agust-15
1	13,832	13,694	18-Nop-15	1	13,893	13,755	19-Agust-15
1	13,780	13,642	17-Nop-15	1	13,900	13,762	18-Agust-15
1	13,801	13,663	16-Nop-15	1	13,832	13,694	14-Agust-15
1	13,701	13,565	13-Nop-15	1	13,816	13,678	13-Agust-15
1	13,643	13,507	12-Nop-15	1	13,827	13,689	12-Agust-15
1	13,644	13,508	11-Nop-15	1	13,609	13,473	11-Agust-15
1	13,687	13,551	10-Nop-15	1	13,604	13,468	10-Agust-15
1	13,755	13,619	09-Nop-15	1	13,604	13,468	07-Agust-15
1	13,618	13,482	06-Nop-15	1	13,597	13,461	06-Agust-15
1	13,671	13,535	05-Nop-15	1	13,585	13,449	05-Agust-15
1	13,528	13,394	04-Nop-15	1	13,562	13,428	04-Agust-15
1	13,662	13,526	03-Nop-15	1	13,559	13,425	03-Agust-15
1	13,750	13,614	02-Nop-15	1	13,548	13,414	31-Jul-15
1	13,707	13,571	30-Okt-15	1	13,535	13,401	30-Jul-15
1	13,630	13,494	29-Okt-15	1	13,511	13,377	29-Jul-15
1	13,698	13,562	28-Okt-15	1	13,527	13,393	28-Jul-15
1	13,694	13,558	27-Okt-15	1	13,520	13,386	27-Jul-15
1	13,711	13,575	26-Okt-15	1	13,515	13,381	24-Jul-15
1	13,558	13,424	23-Okt-15	1	13,461	13,327	23-Jul-15
1	13,708	13,572	22-Okt-15	1	13,435	13,301	22-Jul-15
1	13,764	13,628	21-Okt-15	1	13,396	13,262	15-Jul-15
1	13,702	13,566	20-Okt-15	1	13,387	13,253	14-Jul-15
1	13,631	13,495	19-Okt-15	1	13,376	13,242	13-Jul-15
1	13,602	13,466	16-Okt-15	1	13,371	13,237	10-Jul-15
1	13,354	13,222	15-Okt-15	1	13,414	13,280	09-Jul-15
1	13,625	13,489	13-Okt-15	1	13,413	13,279	08-Jul-15
1	13,533	13,399	12-Okt-15	1	13,380	13,246	07-Jul-15
1	13,589	13,453	09-Okt-15	1	13,420	13,286	06-Jul-15
1	13,878	13,740	08-Okt-15	1	13,383	13,249	03-Jul-15
1	14,135	13,995	07-Okt-15	1	13,404	13,270	02-Jul-15
1	14,454	14,310	06-Okt-15	1	13,398	13,264	01-Jul-15
1	14,677	14,531	05-Okt-15	1	13,399	13,265	30-Jun-15
1	14,783	14,635	02-Okt-15	1	13,423	13,289	29-Jun-15
1	14,727	14,581	01-Okt-15	1	13,405	13,271	26-Jun-15
1	14,730	14,584	30-Sep-15	1	13,390	13,256	25-Jun-15
1	14,802	14,654	29-Sep-15	1	13,346	13,214	24-Jun-15
1	14,769	14,623	28-Sep-15	1	13,383	13,249	23-Jun-15
1	14,763	14,617	25-Sep-15	1	13,385	13,251	22-Jun-15
1	14,696	14,550	23-Sep-15	1	13,391	13,257	19-Jun-15
1	14,558	14,414	22-Sep-15	1	13,408	13,274	18-Jun-15
1	14,523	14,379	21-Sep-15	1	13,434	13,300	17-Jun-15
1	14,535	14,391	18-Sep-15	1	13,400	13,266	16-Jun-15
1	14,524	14,380	17-Sep-15	1	13,400	13,266	15-Jun-15
1	14,514	14,370	16-Sep-15	1	13,384	13,250	12-Jun-15
1	14,443	14,299	15-Sep-15	1	13,358	13,226	11-Jun-15
1	14,394	14,250	14-Sep-15	1	13,396	13,262	10-Jun-15
1	14,378	14,234	11-Sep-15	1	13,429	13,295	09-Jun-15
1	14,394	14,250	10-Sep-15	1	13,427	13,293	08-Jun-15
1	14,315	14,173	09-Sep-15	1	13,354	13,222	05-Jun-15



Nilai	Kurs Jual	Kurs Beli	Tanggal	Nilai	Kurs Jual	Kurs Beli	Tanggal
1	13,309	13,177	04-Jun-15	1	13,027	12,897	03-Mar-15
1	13,262	13,130	03-Jun-15	1	13,058	12,928	02-Mar-15
1	13,296	13,164	01-Jun-15	1	12,927	12,799	27-Feb-15
1	13,277	13,145	29-Mei-15	1	12,926	12,798	26-Feb-15
1	13,271	13,139	28-Mei-15	1	12,951	12,823	25-Feb-15
1	13,295	13,163	27-Mei-15	1	12,930	12,802	24-Feb-15
1	13,258	13,126	26-Mei-15	1	12,877	12,749	23-Feb-15
1	13,252	13,120	25-Mei-15	1	12,913	12,785	20-Feb-15
1	13,202	13,070	22-Mei-15	1	12,868	12,740	18-Feb-15
1	13,216	13,084	21-Mei-15	1	12,821	12,693	17-Feb-15
1	13,235	13,103	20-Mei-15	1	12,806	12,678	16-Feb-15
1	13,249	13,117	19-Mei-15	1	12,833	12,705	13-Feb-15
1	13,182	13,050	18-Mei-15	1	12,858	12,730	12-Feb-15
1	13,155	13,025	15-Mei-15	1	12,764	12,636	11-Feb-15
1	13,254	13,122	13-Mei-15	1	12,707	12,581	10-Feb-15
1	13,269	13,137	12-Mei-15	1	12,742	12,616	09-Feb-15
1	13,182	13,050	11-Mei-15	1	12,676	12,550	06-Feb-15
1	13,243	13,111	08-Mei-15	1	12,716	12,590	05-Feb-15
1	13,130	13,000	07-Mei-15	1	12,672	12,546	04-Feb-15
1	13,105	12,975	06-Mei-15	1	12,706	12,580	03-Feb-15
1	13,058	12,928	05-Mei-15	1	12,764	12,636	02-Feb-15
1	13,086	12,956	04-Mei-15	1	12,688	12,562	30-Jan-15
1	13,002	12,872	30-Apr-15	1	12,578	12,452	29-Jan-15
1	13,029	12,899	29-Apr-15	1	12,560	12,436	28-Jan-15
1	13,043	12,913	28-Apr-15	1	12,555	12,431	27-Jan-15
1	12,987	12,857	27-Apr-15	1	12,580	12,454	26-Jan-15
1	13,006	12,876	24-Apr-15	1	12,506	12,382	23-Jan-15
1	13,004	12,874	23-Apr-15	1	12,513	12,389	22-Jan-15
1	13,017	12,887	22-Apr-15	1	12,620	12,494	21-Jan-15
1	13,007	12,877	21-Apr-15	1	12,722	12,596	20-Jan-15
1	12,939	12,811	20-Apr-15	1	12,675	12,549	19-Jan-15
1	12,927	12,799	17-Apr-15	1	12,656	12,530	16-Jan-15
1	12,902	12,774	16-Apr-15	1	12,680	12,554	15-Jan-15
1	13,041	12,911	15-Apr-15	1	12,643	12,517	14-Jan-15
1	13,044	12,914	14-Apr-15	1	12,671	12,545	13-Jan-15
1	13,010	12,880	13-Apr-15	1	12,631	12,505	12-Jan-15
1	12,975	12,845	10-Apr-15	1	12,703	12,577	09-Jan-15
1	13,038	12,908	09-Apr-15	1	12,795	12,667	08-Jan-15
1	13,067	12,937	08-Apr-15	1	12,796	12,668	07-Jan-15
1	13,047	12,917	07-Apr-15	1	12,721	12,595	06-Jan-15
1	13,007	12,877	06-Apr-15	1	12,652	12,526	05-Jan-15
1	13,065	12,935	02-Apr-15	1	12,536	12,412	02-Jan-15
1	13,108	12,978	01-Apr-15				
1	13,149	13,019	31-Mar-15				
1	13,151	13,021	30-Mar-15				
1	13,129	12,999	27-Mar-15				
1	13,068	12,938	26-Mar-15				
1	12,997	12,867	25-Mar-15				
1	13,037	12,907	24-Mar-15				
1	13,141	13,011	23-Mar-15				
1	13,140	13,010	20-Mar-15				
1	13,073	12,943	19-Mar-15				
1	13,230	13,098	18-Mar-15				
1	13,275	13,143	17-Mar-15				
1	13,303	13,171	16-Mar-15				
1	13,257	13,125	13-Mar-15				
1	13,242	13,110	12-Mar-15				
1	13,230	13,098	11-Mar-15				
1	13,124	12,994	10-Mar-15				
1	13,112	12,982	09-Mar-15				
1	13,048	12,918	06-Mar-15				
1	13,087	12,957	05-Mar-15				
1	13,028	12,898	04-Mar-15				



### 3. DATA SUKU BUNGA

Variabel		BI Rate
2005	Tahunan	12,75
2006	Tahunan	9,75
2007	Tahunan	8,00
2008	Tahunan	9,25
2009	Januari	8,75
	Februari	8,25
	Maret	7,75
	April	7,50
	Mei	7,25
	Juni	7,00
	Juli	6,75
	Agustus	6,50
	September	6,50
	Oktober	6,50
	November	6,50
	Desember	6,50
2010	Januari	6,50
	Februari	6,50
	Maret	6,50
	April	6,50
	Mei	6,50
	Juni	6,50
	Juli	6,50
	Agustus	6,50
	September	6,50
	Oktober	6,50
	November	6,50
	Desember	6,50
2011	Januari	6,50
	Februari	6,75
	Maret	6,75
	April	6,75
	Mei	6,75
	Juni	6,75
	Juli	6,75
	Agustus	6,75
	September	6,75
	Oktober	6,50
	November	6,00

	Variabel	BI Rate
	Desember	6,00
2012	Januari	6,00
	Februari	5,75
	Maret	5,75
	April	5,75
	Mei	5,75
	Juni	5,75
	Juli	5,75
	Agustus	5,75
	September	5,75
	Oktober	5,75
	November	5,75
	Desember	5,75
2013	Januari	5,75
	Februari	5,75
	Maret	5,75
	April	5,75
	Mei	5,75
	Juni	6,00
	Juli	6,50
	Agustus	7,00
	September	7,25
	Oktober	7,25
	November	7,50
	Desember	7,50
2014	Januari	7,50
	Februari	7,50
	Maret	7,50
	April	7,50
	Mei	7,50
	Juni	7,50
	Juli	7,50
	Agustus	7,50
	September	7,50
	Oktober	7,50
	November	7,75
	Desember	7,75
2015	Januari	7,75
	Februari	7,50
	Maret	7,50

	Variabel	BI Rate
	April	7,50
	Mei	7,50
	Juni	7,50
	Juli	7,50
	Agustus	7,50
	September	7,50
	Oktober	7,50
	November	7,50
	Desember	7,50
2016	Januari	7,25
	Februari	7,00
	Maret	6,75
	April	6,75
	Mei	6,75
	Juni	6,50
	Juli	6,50
	Agustus	5,25
	September	5,00
	Oktober	4,75
	November	4,75
	Desember	4,75
2017	Januari	4,75
	Februari	4,75
	Maret	4,75
	April	4,75
	Mei	4,75
	Juni	4,75
	Juli	4,75
	Agustus	4,50
	September	4,25
	Oktober	4,25
	November	4,25
	Desember	4,25
2018	Januari	4,25
	Februari	4,25
	Maret	4,25

**LAMPIRAN 2: RAW DATA OLAHAN**

BANK	TAHUN	KURS	SUKU BUNGA	HARGA SAHAM
AGRO	2015-1	13,926	7.75	100
AGRO	2015-2	13,747	7.50	101
AGRO	2015-3	13,904	7.50	102
AGRO	2015-4	14,471	7.50	98
AGRO	2015-5	13,851	7.50	94
AGRO	2015-6	13,432	7.50	95
AGRO	2015-7	13,387	7.50	90
AGRO	2015-8	13,220	7.50	80
AGRO	2015-9	13,007	7.50	79
AGRO	2015-10	13,133	7.50	101
AGRO	2015-11	12,884	7.50	98
AGRO	2015-12	12,649	7.50	97
AGRO	2016-1	13,470	7.25	92
AGRO	2016-2	13,438	7.00	82
AGRO	2016-3	13,085	6.75	90
AGRO	2016-4	13,158	6.75	167
AGRO	2016-5	13,252	6.75	153
AGRO	2016-6	13,183	6.50	302
AGRO	2016-7	13,366	6.50	416
AGRO	2016-8	13,568	5.25	316
AGRO	2016-9	13,265	5.00	330
AGRO	2016-10	13,250	4.75	290
AGRO	2016-11	13,421	4.75	478
AGRO	2016-12	13,854	4.75	386
AGRO	2017-1	13,624	4.75	486
AGRO	2017-2	13,592	4.75	985
AGRO	2017-3	13,594	4.75	825
AGRO	2017-4	13,370	4.75	805
AGRO	2017-5	13,409	4.75	785
AGRO	2017-6	13,409	4.75	730
AGRO	2017-7	13,365	4.75	600
AGRO	2017-8	13,390	4.50	510
AGRO	2017-9	13,373	4.25	615
AGRO	2017-10	13,413	4.25	535
AGRO	2017-11	13,408	4.25	535
AGRO	2017-12	13,426	4.25	525
AGRS	2015-1	13,926	7.75	133
AGRS	2015-2	13,747	7.50	135

BANK	TAHUN	KURS	SUKU BUNGA	HARGA SAHAM
AGRS	2015-3	13,904	7.50	148
AGRS	2015-4	14,471	7.50	135
AGRS	2015-5	13,851	7.50	129
AGRS	2015-6	13,432	7.50	122
AGRS	2015-7	13,387	7.50	92
AGRS	2015-8	13,220	7.50	87
AGRS	2015-9	13,007	7.50	116
AGRS	2015-10	13,133	7.50	39
AGRS	2015-11	12,884	7.50	39
AGRS	2015-12	12,649	7.50	85
AGRS	2016-1	13,470	7.25	92
AGRS	2016-2	13,438	7.00	94
AGRS	2016-3	13,085	6.75	94
AGRS	2016-4	13,158	6.75	98
AGRS	2016-5	13,252	6.75	92
AGRS	2016-6	13,183	6.50	93
AGRS	2016-7	13,366	6.50	95
AGRS	2016-8	13,568	5.25	96
AGRS	2016-9	13,265	5.00	93
AGRS	2016-10	13,250	4.75	82
AGRS	2016-11	13,421	4.75	93
AGRS	2016-12	13,854	4.75	91
AGRS	2017-1	13,624	4.75	93
AGRS	2017-2	13,592	4.75	109
AGRS	2017-3	13,594	4.75	100
AGRS	2017-4	13,370	4.75	204
AGRS	2017-5	13,409	4.75	170
AGRS	2017-6	13,409	4.75	446
AGRS	2017-7	13,365	4.75	330
AGRS	2017-8	13,390	4.50	258
AGRS	2017-9	13,373	4.25	252
AGRS	2017-10	13,413	4.25	252
AGRS	2017-11	13,408	4.25	252
AGRS	2017-12	13,426	4.25	230
BABP	2015-1	13,926	7.75	80
BABP	2015-2	13,747	7.50	92
BABP	2015-3	13,904	7.50	91
BABP	2015-4	14,471	7.50	89

BANK	TAHUN	KURS	SUKU BUNGA	HARGA SAHAM
BABP	2015-5	13,851	7.50	85
BABP	2015-6	13,432	7.50	75
BABP	2015-7	13,387	7.50	77
BABP	2015-8	13,220	7.50	70
BABP	2015-9	13,007	7.50	71
BABP	2015-10	13,133	7.50	72
BABP	2015-11	12,884	7.50	67
BABP	2015-12	12,649	7.50	70
BABP	2016-1	13,470	7.25	61
BABP	2016-2	13,438	7.00	61
BABP	2016-3	13,085	6.75	78
BABP	2016-4	13,158	6.75	74
BABP	2016-5	13,252	6.75	72
BABP	2016-6	13,183	6.50	70
BABP	2016-7	13,366	6.50	75
BABP	2016-8	13,568	5.25	76
BABP	2016-9	13,265	5.00	75
BABP	2016-10	13,250	4.75	66
BABP	2016-11	13,421	4.75	69
BABP	2016-12	13,854	4.75	68
BABP	2017-1	13,624	4.75	72
BABP	2017-2	13,592	4.75	68
BABP	2017-3	13,594	4.75	67
BABP	2017-4	13,370	4.75	67
BABP	2017-5	13,409	4.75	62
BABP	2017-6	13,409	4.75	59
BABP	2017-7	13,365	4.75	50
BABP	2017-8	13,390	4.50	51
BABP	2017-9	13,373	4.25	51
BABP	2017-10	13,413	4.25	52
BABP	2017-11	13,408	4.25	50
BABP	2017-12	13,426	4.25	51
BACA	2015-1	13,926	7.75	104
BACA	2015-2	13,747	7.50	117
BACA	2015-3	13,904	7.50	204
BACA	2015-4	14,471	7.50	226
BACA	2015-5	13,851	7.50	200
BACA	2015-6	13,432	7.50	200
BACA	2015-7	13,387	7.50	159

BANK	TAHUN	KURS	SUKU BUNGA	HARGA SAHAM
BACA	2015-8	13,220	7.50	197
BACA	2015-9	13,007	7.50	164
BACA	2015-10	13,133	7.50	159
BACA	2015-11	12,884	7.50	156
BACA	2015-12	12,649	7.50	205
BACA	2016-1	13,470	7.25	150
BACA	2016-2	13,438	7.00	178
BACA	2016-3	13,085	6.75	210
BACA	2016-4	13,158	6.75	203
BACA	2016-5	13,252	6.75	204
BACA	2016-6	13,183	6.50	206
BACA	2016-7	13,366	6.50	158
BACA	2016-8	13,568	5.25	186
BACA	2016-9	13,265	5.00	210
BACA	2016-10	13,250	4.75	195
BACA	2016-11	13,421	4.75	192
BACA	2016-12	13,854	4.75	206
BACA	2017-1	13,624	4.75	204
BACA	2017-2	13,592	4.75	202
BACA	2017-3	13,594	4.75	202
BACA	2017-4	13,370	4.75	200
BACA	2017-5	13,409	4.75	199
BACA	2017-6	13,409	4.75	199
BACA	2017-7	13,365	4.75	200
BACA	2017-8	13,390	4.50	202
BACA	2017-9	13,373	4.25	197
BACA	2017-10	13,413	4.25	220
BACA	2017-11	13,408	4.25	212
BACA	2017-12	13,426	4.25	216
BBCA	2015-1	13,926	7.75	13,375
BBCA	2015-2	13,747	7.50	14,100
BBCA	2015-3	13,904	7.50	14,825
BBCA	2015-4	14,471	7.50	13,475
BBCA	2015-5	13,851	7.50	14,125
BBCA	2015-6	13,432	7.50	13,500
BBCA	2015-7	13,387	7.50	13,100
BBCA	2015-8	13,220	7.50	12,900
BBCA	2015-9	13,007	7.50	12,275
BBCA	2015-10	13,133	7.50	12,900

BANK	TAHUN	KURS	SUKU BUNGA	HARGA SAHAM
BBCA	2015-11	12,884	7.50	12,375
BBCA	2015-12	12,649	7.50	13,300
BBCA	2016-1	13,470	7.25	13,100
BBCA	2016-2	13,438	7.00	13,475
BBCA	2016-3	13,085	6.75	13,300
BBCA	2016-4	13,158	6.75	13,050
BBCA	2016-5	13,252	6.75	13,000
BBCA	2016-6	13,183	6.50	13,325
BBCA	2016-7	13,366	6.50	14,450
BBCA	2016-8	13,568	5.25	15,050
BBCA	2016-9	13,265	5.00	15,700
BBCA	2016-10	13,250	4.75	15,525
BBCA	2016-11	13,421	4.75	14,300
BBCA	2016-12	13,854	4.75	15,500
BBCA	2017-1	13,624	4.75	15,300
BBCA	2017-2	13,592	4.75	15,450
BBCA	2017-3	13,594	4.75	16,550
BBCA	2017-4	13,370	4.75	17,750
BBCA	2017-5	13,409	4.75	17,150
BBCA	2017-6	13,409	4.75	18,150
BBCA	2017-7	13,365	4.75	18,700
BBCA	2017-8	13,390	4.50	18,950
BBCA	2017-9	13,373	4.25	20,300
BBCA	2017-10	13,413	4.25	20,900
BBCA	2017-11	13,408	4.25	20,350
BBCA	2017-12	13,426	4.25	21,900
BBHI	2015-1	13,926	7.75	0
BBHI	2015-2	13,747	7.50	0
BBHI	2015-3	13,904	7.50	0
BBHI	2015-4	14,471	7.50	0
BBHI	2015-5	13,851	7.50	0
BBHI	2015-6	13,432	7.50	0
BBHI	2015-7	13,387	7.50	0
BBHI	2015-8	13,220	7.50	177
BBHI	2015-9	13,007	7.50	115
BBHI	2015-10	13,133	7.50	102
BBHI	2015-11	12,884	7.50	125
BBHI	2015-12	12,649	7.50	120
BBHI	2016-1	13,470	7.25	120

BANK	TAHUN	KURS	SUKU BUNGA	HARGA SAHAM
BBHI	2016-2	13,438	7.00	119
BBHI	2016-3	13,085	6.75	109
BBHI	2016-4	13,158	6.75	100
BBHI	2016-5	13,252	6.75	100
BBHI	2016-6	13,183	6.50	102
BBHI	2016-7	13,366	6.50	94
BBHI	2016-8	13,568	5.25	96
BBHI	2016-9	13,265	5.00	82
BBHI	2016-10	13,250	4.75	84
BBHI	2016-11	13,421	4.75	74
BBHI	2016-12	13,854	4.75	66
BBHI	2017-1	13,624	4.75	99
BBHI	2017-2	13,592	4.75	90
BBHI	2017-3	13,594	4.75	184
BBHI	2017-4	13,370	4.75	182
BBHI	2017-5	13,409	4.75	104
BBHI	2017-6	13,409	4.75	204
BBHI	2017-7	13,365	4.75	230
BBHI	2017-8	13,390	4.50	152
BBHI	2017-9	13,373	4.25	153
BBHI	2017-10	13,413	4.25	142
BBHI	2017-11	13,408	4.25	128
BBHI	2017-12	13,426	4.25	113
BBKP	2015-1	13,926	7.75	770
BBKP	2015-2	13,747	7.50	795
BBKP	2015-3	13,904	7.50	710
BBKP	2015-4	14,471	7.50	695
BBKP	2015-5	13,851	7.50	720
BBKP	2015-6	13,432	7.50	660
BBKP	2015-7	13,387	7.50	625
BBKP	2015-8	13,220	7.50	680
BBKP	2015-9	13,007	7.50	630
BBKP	2015-10	13,133	7.50	700
BBKP	2015-11	12,884	7.50	680
BBKP	2015-12	12,649	7.50	700
BBKP	2016-1	13,470	7.25	630
BBKP	2016-2	13,438	7.00	545
BBKP	2016-3	13,085	6.75	595
BBKP	2016-4	13,158	6.75	600

BANK	TAHUN	KURS	SUKU BUNGA	HARGA SAHAM
BBKP	2016-5	13,252	6.75	535
BBKP	2016-6	13,183	6.50	570
BBKP	2016-7	13,366	6.50	615
BBKP	2016-8	13,568	5.25	715
BBKP	2016-9	13,265	5.00	610
BBKP	2016-10	13,250	4.75	690
BBKP	2016-11	13,421	4.75	640
BBKP	2016-12	13,854	4.75	640
BBKP	2017-1	13,624	4.75	610
BBKP	2017-2	13,592	4.75	605
BBKP	2017-3	13,594	4.75	625
BBKP	2017-4	13,370	4.75	630
BBKP	2017-5	13,409	4.75	630
BBKP	2017-6	13,409	4.75	630
BBKP	2017-7	13,365	4.75	595
BBKP	2017-8	13,390	4.50	595
BBKP	2017-9	13,373	4.25	560
BBKP	2017-10	13,413	4.25	555
BBKP	2017-11	13,408	4.25	615
BBKP	2017-12	13,426	4.25	590
BBMD	2015-1	13,926	7.75	1,600
BBMD	2015-2	13,747	7.50	1,590
BBMD	2015-3	13,904	7.50	1,590
BBMD	2015-4	14,471	7.50	1,600
BBMD	2015-5	13,851	7.50	1,600
BBMD	2015-6	13,432	7.50	1,610
BBMD	2015-7	13,387	7.50	1,610
BBMD	2015-8	13,220	7.50	1,590
BBMD	2015-9	13,007	7.50	1,545
BBMD	2015-10	13,133	7.50	1,560
BBMD	2015-11	12,884	7.50	1,560
BBMD	2015-12	12,649	7.50	1,560
BBMD	2016-1	13,470	7.25	1,560
BBMD	2016-2	13,438	7.00	1,545
BBMD	2016-3	13,085	6.75	1,555
BBMD	2016-4	13,158	6.75	1,550
BBMD	2016-5	13,252	6.75	1,545
BBMD	2016-6	13,183	6.50	1,545
BBMD	2016-7	13,366	6.50	1,550

BANK	TAHUN	KURS	SUKU BUNGA	HARGA SAHAM
BBMD	2016-8	13,568	5.25	1,225
BBMD	2016-9	13,265	5.00	1,570
BBMD	2016-10	13,250	4.75	1,570
BBMD	2016-11	13,421	4.75	1,550
BBMD	2016-12	13,854	4.75	1,500
BBMD	2017-1	13,624	4.75	1,500
BBMD	2017-2	13,592	4.75	1,458
BBMD	2017-3	13,594	4.75	1,550
BBMD	2017-4	13,370	4.75	1,600
BBMD	2017-5	13,409	4.75	1,380
BBMD	2017-6	13,409	4.75	1,480
BBMD	2017-7	13,365	4.75	1,345
BBMD	2017-8	13,390	4.50	1,400
BBMD	2017-9	13,373	4.25	1,230
BBMD	2017-10	13,413	4.25	1,400
BBMD	2017-11	13,408	4.25	1,385
BBMD	2017-12	13,426	4.25	1,375
BBNI	2015-1	13,926	7.75	6,250
BBNI	2015-2	13,747	7.50	6,875
BBNI	2015-3	13,904	7.50	7,225
BBNI	2015-4	14,471	7.50	6,425
BBNI	2015-5	13,851	7.50	6,875
BBNI	2015-6	13,432	7.50	5,300
BBNI	2015-7	13,387	7.50	4,760
BBNI	2015-8	13,220	7.50	4,950
BBNI	2015-9	13,007	7.50	4,135
BBNI	2015-10	13,133	7.50	4,755
BBNI	2015-11	12,884	7.50	4,770
BBNI	2015-12	12,649	7.50	4,990
BBNI	2016-1	13,470	7.25	4,910
BBNI	2016-2	13,438	7.00	5,075
BBNI	2016-3	13,085	6.75	5,200
BBNI	2016-4	13,158	6.75	4,585
BBNI	2016-5	13,252	6.75	4,800
BBNI	2016-6	13,183	6.50	5,200
BBNI	2016-7	13,366	6.50	5,350
BBNI	2016-8	13,568	5.25	5,875
BBNI	2016-9	13,265	5.00	5,550
BBNI	2016-10	13,250	4.75	5,575

BANK	TAHUN	KURS	SUKU BUNGA	HARGA SAHAM
BBNI	2016-11	13,421	4.75	5,175
BBNI	2016-12	13,854	4.75	5,525
BBNI	2017-1	13,624	4.75	5,700
BBNI	2017-2	13,592	4.75	6,250
BBNI	2017-3	13,594	4.75	6,475
BBNI	2017-4	13,370	4.75	6,375
BBNI	2017-5	13,409	4.75	6,550
BBNI	2017-6	13,409	4.75	6,600
BBNI	2017-7	13,365	4.75	7,450
BBNI	2017-8	13,390	4.50	7,750
BBNI	2017-9	13,373	4.25	7,400
BBNI	2017-10	13,413	4.25	7,600
BBNI	2017-11	13,408	4.25	8,100
BBNI	2017-12	13,426	4.25	9,900
BBNP	2015-1	13,926	7.75	2,310
BBNP	2015-2	13,747	7.50	2,310
BBNP	2015-3	13,904	7.50	2,310
BBNP	2015-4	14,471	7.50	2,310
BBNP	2015-5	13,851	7.50	2,320
BBNP	2015-6	13,432	7.50	2,320
BBNP	2015-7	13,387	7.50	2,320
BBNP	2015-8	13,220	7.50	2,320
BBNP	2015-9	13,007	7.50	2,320
BBNP	2015-10	13,133	7.50	1,860
BBNP	2015-11	12,884	7.50	1,860
BBNP	2015-12	12,649	7.50	1,860
BBNP	2016-1	13,470	7.25	1,860
BBNP	2016-2	13,438	7.00	1,860
BBNP	2016-3	13,085	6.75	1,860
BBNP	2016-4	13,158	6.75	1,860
BBNP	2016-5	13,252	6.75	1,860
BBNP	2016-6	13,183	6.50	1,860
BBNP	2016-7	13,366	6.50	1,910
BBNP	2016-8	13,568	5.25	1,910
BBNP	2016-9	13,265	5.00	1,910
BBNP	2016-10	13,250	4.75	1,910
BBNP	2016-11	13,421	4.75	1,910
BBNP	2016-12	13,854	4.75	1,910
BBNP	2017-1	13,624	4.75	1,910

BANK	TAHUN	KURS	SUKU BUNGA	HARGA SAHAM
BBNP	2017-2	13,592	4.75	1,910
BBNP	2017-3	13,594	4.75	1,910
BBNP	2017-4	13,370	4.75	1,910
BBNP	2017-5	13,409	4.75	1,450
BBNP	2017-6	13,409	4.75	1,450
BBNP	2017-7	13,365	4.75	1,450
BBNP	2017-8	13,390	4.50	1,450
BBNP	2017-9	13,373	4.25	1,450
BBNP	2017-10	13,413	4.25	1,450
BBNP	2017-11	13,408	4.25	1,450
BBNP	2017-12	13,426	4.25	1,450
BBRI	2015-1	13,926	7.75	11,675
BBRI	2015-2	13,747	7.50	12,875
BBRI	2015-3	13,904	7.50	13,275
BBRI	2015-4	14,471	7.50	11,625
BBRI	2015-5	13,851	7.50	11,775
BBRI	2015-6	13,432	7.50	10,350
BBRI	2015-7	13,387	7.50	10,000
BBRI	2015-8	13,220	7.50	10,625
BBRI	2015-9	13,007	7.50	8,650
BBRI	2015-10	13,133	7.50	10,525
BBRI	2015-11	12,884	7.50	10,775
BBRI	2015-12	12,649	7.50	11,425
BBRI	2016-1	13,470	7.25	11,225
BBRI	2016-2	13,438	7.00	11,075
BBRI	2016-3	13,085	6.75	11,425
BBRI	2016-4	13,158	6.75	10,350
BBRI	2016-5	13,252	6.75	10,350
BBRI	2016-6	13,183	6.50	10,800
BBRI	2016-7	13,366	6.50	11,525
BBRI	2016-8	13,568	5.25	11,650
BBRI	2016-9	13,265	5.00	12,200
BBRI	2016-10	13,250	4.75	12,200
BBRI	2016-11	13,421	4.75	10,900
BBRI	2016-12	13,854	4.75	11,675
BBRI	2017-1	13,624	4.75	11,725
BBRI	2017-2	13,592	4.75	11,950
BBRI	2017-3	13,594	4.75	12,975
BBRI	2017-4	13,370	4.75	12,900



BANK	TAHUN	KURS	SUKU BUNGA	HARGA SAHAM
BBRI	2017-5	13,409	4.75	14,475
BBRI	2017-6	13,409	4.75	15,250
BBRI	2017-7	13,365	4.75	14,775
BBRI	2017-8	13,390	4.50	15,125
BBRI	2017-9	13,373	4.25	15,275
BBRI	2017-10	13,413	4.25	15,600
BBRI	2017-11	13,408	4.25	3,210
BBRI	2017-12	13,426	4.25	3,640
BBTN	2015-1	13,926	7.75	995
BBTN	2015-2	13,747	7.50	1,070
BBTN	2015-3	13,904	7.50	1,255
BBTN	2015-4	14,471	7.50	1,115
BBTN	2015-5	13,851	7.50	1,205
BBTN	2015-6	13,432	7.50	1,190
BBTN	2015-7	13,387	7.50	1,170
BBTN	2015-8	13,220	7.50	1,065
BBTN	2015-9	13,007	7.50	995
BBTN	2015-10	13,133	7.50	185
BBTN	2015-11	12,884	7.50	1,270
BBTN	2015-12	12,649	7.50	1,295
BBTN	2016-1	13,470	7.25	1,365
BBTN	2016-2	13,438	7.00	1,660
BBTN	2016-3	13,085	6.75	1,745
BBTN	2016-4	13,158	6.75	1,760
BBTN	2016-5	13,252	6.75	1,705
BBTN	2016-6	13,183	6.50	1,715
BBTN	2016-7	13,366	6.50	1,975
BBTN	2016-8	13,568	5.25	1,210
BBTN	2016-9	13,265	5.00	1,920
BBTN	2016-10	13,250	4.75	1,910
BBTN	2016-11	13,421	4.75	1,650
BBTN	2016-12	13,854	4.75	1,740
BBTN	2017-1	13,624	4.75	1,905
BBTN	2017-2	13,592	4.75	2,140
BBTN	2017-3	13,594	4.75	2,270
BBTN	2017-4	13,370	4.75	2,300
BBTN	2017-5	13,409	4.75	2,500
BBTN	2017-6	13,409	4.75	2,600
BBTN	2017-7	13,365	4.75	2,600

BANK	TAHUN	KURS	SUKU BUNGA	HARGA SAHAM
BBTN	2017-8	13,390	4.50	3,010
BBTN	2017-9	13,373	4.25	3,150
BBTN	2017-10	13,413	4.25	2,760
BBTN	2017-11	13,408	4.25	3,200
BBTN	2017-12	13,426	4.25	3,570
BBYB	2015-1	13,926	7.75	112
BBYB	2015-2	13,747	7.50	98
BBYB	2015-3	13,904	7.50	93
BBYB	2015-4	14,471	7.50	92
BBYB	2015-5	13,851	7.50	87
BBYB	2015-6	13,432	7.50	85
BBYB	2015-7	13,387	7.50	83
BBYB	2015-8	13,220	7.50	87
BBYB	2015-9	13,007	7.50	89
BBYB	2015-10	13,133	7.50	113
BBYB	2015-11	12,884	7.50	160
BBYB	2015-12	12,649	7.50	386
BBYB	2016-1	13,470	7.25	137
BBYB	2016-2	13,438	7.00	209
BBYB	2016-3	13,085	6.75	210
BBYB	2016-4	13,158	6.75	157
BBYB	2016-5	13,252	6.75	163
BBYB	2016-6	13,183	6.50	170
BBYB	2016-7	13,366	6.50	170
BBYB	2016-8	13,568	5.25	250
BBYB	2016-9	13,265	5.00	292
BBYB	2016-10	13,250	4.75	290
BBYB	2016-11	13,421	4.75	268
BBYB	2016-12	13,854	4.75	438
BBYB	2017-1	13,624	4.75	310
BBYB	2017-2	13,592	4.75	288
BBYB	2017-3	13,594	4.75	450
BBYB	2017-4	13,370	4.75	350
BBYB	2017-5	13,409	4.75	320
BBYB	2017-6	13,409	4.75	360
BBYB	2017-7	13,365	4.75	300
BBYB	2017-8	13,390	4.50	380
BBYB	2017-9	13,373	4.25	350
BBYB	2017-10	13,413	4.25	300

BANK	TAHUN	KURS	SUKU BUNGA	HARGA SAHAM
BBYB	2017-11	13,408	4.25	296
BBYB	2017-12	13,426	4.25	400
BCIC	2015-1	13,926	7.75	50
BCIC	2015-2	13,747	7.50	50
BCIC	2015-3	13,904	7.50	50
BCIC	2015-4	14,471	7.50	50
BCIC	2015-5	13,851	7.50	50
BCIC	2015-6	13,432	7.50	50
BCIC	2015-7	13,387	7.50	50
BCIC	2015-8	13,220	7.50	50
BCIC	2015-9	13,007	7.50	50
BCIC	2015-10	13,133	7.50	50
BCIC	2015-11	12,884	7.50	50
BCIC	2015-12	12,649	7.50	50
BCIC	2016-1	13,470	7.25	50
BCIC	2016-2	13,438	7.00	50
BCIC	2016-3	13,085	6.75	50
BCIC	2016-4	13,158	6.75	50
BCIC	2016-5	13,252	6.75	50
BCIC	2016-6	13,183	6.50	50
BCIC	2016-7	13,366	6.50	50
BCIC	2016-8	13,568	5.25	50
BCIC	2016-9	13,265	5.00	50
BCIC	2016-10	13,250	4.75	50
BCIC	2016-11	13,421	4.75	50
BCIC	2016-12	13,854	4.75	50
BCIC	2017-1	13,624	4.75	50
BCIC	2017-2	13,592	4.75	50
BCIC	2017-3	13,594	4.75	50
BCIC	2017-4	13,370	4.75	50
BCIC	2017-5	13,409	4.75	50
BCIC	2017-6	13,409	4.75	50
BCIC	2017-7	13,365	4.75	50
BCIC	2017-8	13,390	4.50	50
BCIC	2017-9	13,373	4.25	50
BCIC	2017-10	13,413	4.25	50
BCIC	2017-11	13,408	4.25	50
BCIC	2017-12	13,426	4.25	50
BDMN	2015-1	13,926	7.75	4,400

BANK	TAHUN	KURS	SUKU BUNGA	HARGA SAHAM
BDMN	2015-2	13,747	7.50	4,800
BDMN	2015-3	13,904	7.50	5,125
BDMN	2015-4	14,471	7.50	3,970
BDMN	2015-5	13,851	7.50	4,420
BDMN	2015-6	13,432	7.50	4,300
BDMN	2015-7	13,387	7.50	4,200
BDMN	2015-8	13,220	7.50	3,535
BDMN	2015-9	13,007	7.50	2,895
BDMN	2015-10	13,133	7.50	2,760
BDMN	2015-11	12,884	7.50	2,825
BDMN	2015-12	12,649	7.50	3,200
BDMN	2016-1	13,470	7.25	4,060
BDMN	2016-2	13,438	7.00	4,025
BDMN	2016-3	13,085	6.75	3,800
BDMN	2016-4	13,158	6.75	3,290
BDMN	2016-5	13,252	6.75	3,280
BDMN	2016-6	13,183	6.50	3,540
BDMN	2016-7	13,366	6.50	3,500
BDMN	2016-8	13,568	5.25	4,080
BDMN	2016-9	13,265	5.00	4,050
BDMN	2016-10	13,250	4.75	3,860
BDMN	2016-11	13,421	4.75	3,250
BDMN	2016-12	13,854	4.75	3,710
BDMN	2017-1	13,624	4.75	4,160
BDMN	2017-2	13,592	4.75	4,950
BDMN	2017-3	13,594	4.75	4,700
BDMN	2017-4	13,370	4.75	4,860
BDMN	2017-5	13,409	4.75	5,225
BDMN	2017-6	13,409	4.75	5,125
BDMN	2017-7	13,365	4.75	5,700
BDMN	2017-8	13,390	4.50	5,450
BDMN	2017-9	13,373	4.25	5,200
BDMN	2017-10	13,413	4.25	5,100
BDMN	2017-11	13,408	4.25	1,025
BDMN	2017-12	13,426	4.25	6,950
BEKS	2015-1	13,926	7.75	73
BEKS	2015-2	13,747	7.50	70
BEKS	2015-3	13,904	7.50	68
BEKS	2015-4	14,471	7.50	78

BANK	TAHUN	KURS	SUKU BUNGA	HARGA SAHAM
BEKS	2015-5	13,851	7.50	76
BEKS	2015-6	13,432	7.50	80
BEKS	2015-7	13,387	7.50	59
BEKS	2015-8	13,220	7.50	55
BEKS	2015-9	13,007	7.50	53
BEKS	2015-10	13,133	7.50	59
BEKS	2015-11	12,884	7.50	58
BEKS	2015-12	12,649	7.50	53
BEKS	2016-1	13,470	7.25	62
BEKS	2016-2	13,438	7.00	95
BEKS	2016-3	13,085	6.75	97
BEKS	2016-4	13,158	6.75	72
BEKS	2016-5	13,252	6.75	72
BEKS	2016-6	13,183	6.50	61
BEKS	2016-7	13,366	6.50	90
BEKS	2016-8	13,568	5.25	60
BEKS	2016-9	13,265	5.00	58
BEKS	2016-10	13,250	4.75	59
BEKS	2016-11	13,421	4.75	81
BEKS	2016-12	13,854	4.75	57
BEKS	2017-1	13,624	4.75	57
BEKS	2017-2	13,592	4.75	56
BEKS	2017-3	13,594	4.75	53
BEKS	2017-4	13,370	4.75	54
BEKS	2017-5	13,409	4.75	50
BEKS	2017-6	13,409	4.75	50
BEKS	2017-7	13,365	4.75	50
BEKS	2017-8	13,390	4.50	50
BEKS	2017-9	13,373	4.25	50
BEKS	2017-10	13,413	4.25	50
BEKS	2017-11	13,408	4.25	50
BEKS	2017-12	13,426	4.25	50
BINA	2015-1	13,926	7.75	280
BINA	2015-2	13,747	7.50	280
BINA	2015-3	13,904	7.50	286
BINA	2015-4	14,471	7.50	280
BINA	2015-5	13,851	7.50	285
BINA	2015-6	13,432	7.50	260
BINA	2015-7	13,387	7.50	280

BANK	TAHUN	KURS	SUKU BUNGA	HARGA SAHAM
BINA	2015-8	13,220	7.50	270
BINA	2015-9	13,007	7.50	287
BINA	2015-10	13,133	7.50	287
BINA	2015-11	12,884	7.50	290
BINA	2015-12	12,649	7.50	290
BINA	2016-1	13,470	7.25	295
BINA	2016-2	13,438	7.00	300
BINA	2016-3	13,085	6.75	295
BINA	2016-4	13,158	6.75	295
BINA	2016-5	13,252	6.75	276
BINA	2016-6	13,183	6.50	300
BINA	2016-7	13,366	6.50	260
BINA	2016-8	13,568	5.25	260
BINA	2016-9	13,265	5.00	228
BINA	2016-10	13,250	4.75	200
BINA	2016-11	13,421	4.75	222
BINA	2016-12	13,854	4.75	244
BINA	2017-1	13,624	4.75	354
BINA	2017-2	13,592	4.75	270
BINA	2017-3	13,594	4.75	1,055
BINA	2017-4	13,370	4.75	1,350
BINA	2017-5	13,409	4.75	1,385
BINA	2017-6	13,409	4.75	1,370
BINA	2017-7	13,365	4.75	1,275
BINA	2017-8	13,390	4.50	1,220
BINA	2017-9	13,373	4.25	1,055
BINA	2017-10	13,413	4.25	985
BINA	2017-11	13,408	4.25	940
BINA	2017-12	13,426	4.25	995
BJBR	2015-1	13,926	7.75	825
BJBR	2015-2	13,747	7.50	980
BJBR	2015-3	13,904	7.50	1,000
BJBR	2015-4	14,471	7.50	875
BJBR	2015-5	13,851	7.50	890
BJBR	2015-6	13,432	7.50	820
BJBR	2015-7	13,387	7.50	805
BJBR	2015-8	13,220	7.50	695
BJBR	2015-9	13,007	7.50	615
BJBR	2015-10	13,133	7.50	755

BANK	TAHUN	KURS	SUKU BUNGA	HARGA SAHAM
BJBR	2015-11	12,884	7.50	710
BJBR	2015-12	12,649	7.50	755
BJBR	2016-1	13,470	7.25	870
BJBR	2016-2	13,438	7.00	920
BJBR	2016-3	13,085	6.75	965
BJBR	2016-4	13,158	6.75	940
BJBR	2016-5	13,252	6.75	945
BJBR	2016-6	13,183	6.50	1,125
BJBR	2016-7	13,366	6.50	1,425
BJBR	2016-8	13,568	5.25	1,610
BJBR	2016-9	13,265	5.00	1,610
BJBR	2016-10	13,250	4.75	1,590
BJBR	2016-11	13,421	4.75	1,550
BJBR	2016-12	13,854	4.75	3,390
BJBR	2017-1	13,624	4.75	2,300
BJBR	2017-2	13,592	4.75	2,300
BJBR	2017-3	13,594	4.75	2,020
BJBR	2017-4	13,370	4.75	2,010
BJBR	2017-5	13,409	4.75	2,350
BJBR	2017-6	13,409	4.75	2,010
BJBR	2017-7	13,365	4.75	2,560
BJBR	2017-8	13,390	4.50	2,600
BJBR	2017-9	13,373	4.25	2,450
BJBR	2017-10	13,413	4.25	2,450
BJBR	2017-11	13,408	4.25	2,490
BJBR	2017-12	13,426	4.25	2,400
BJTM	2015-1	13,926	7.75	520
BJTM	2015-2	13,747	7.50	545
BJTM	2015-3	13,904	7.50	550
BJTM	2015-4	14,471	7.50	482
BJTM	2015-5	13,851	7.50	515
BJTM	2015-6	13,432	7.50	476
BJTM	2015-7	13,387	7.50	465
BJTM	2015-8	13,220	7.50	388
BJTM	2015-9	13,007	7.50	354
BJTM	2015-10	13,133	7.50	433
BJTM	2015-11	12,884	7.50	419
BJTM	2015-12	12,649	7.50	437
BJTM	2016-1	13,470	7.25	540

BANK	TAHUN	KURS	SUKU BUNGA	HARGA SAHAM
BJTM	2016-2	13,438	7.00	414
BJTM	2016-3	13,085	6.75	475
BJTM	2016-4	13,158	6.75	460
BJTM	2016-5	13,252	6.75	444
BJTM	2016-6	13,183	6.50	510
BJTM	2016-7	13,366	6.50	585
BJTM	2016-8	13,568	5.25	600
BJTM	2016-9	13,265	5.00	565
BJTM	2016-10	13,250	4.75	535
BJTM	2016-11	13,421	4.75	505
BJTM	2016-12	13,854	4.75	570
BJTM	2017-1	13,624	4.75	615
BJTM	2017-2	13,592	4.75	570
BJTM	2017-3	13,594	4.75	690
BJTM	2017-4	13,370	4.75	685
BJTM	2017-5	13,409	4.75	680
BJTM	2017-6	13,409	4.75	665
BJTM	2017-7	13,365	4.75	630
BJTM	2017-8	13,390	4.50	70
BJTM	2017-9	13,373	4.25	700
BJTM	2017-10	13,413	4.25	695
BJTM	2017-11	13,408	4.25	735
BJTM	2017-12	13,426	4.25	710
BKSW	2015-1	13,926	7.75	420
BKSW	2015-2	13,747	7.50	400
BKSW	2015-3	13,904	7.50	330
BKSW	2015-4	14,471	7.50	745
BKSW	2015-5	13,851	7.50	660
BKSW	2015-6	13,432	7.50	434
BKSW	2015-7	13,387	7.50	380
BKSW	2015-8	13,220	7.50	325
BKSW	2015-9	13,007	7.50	335
BKSW	2015-10	13,133	7.50	329
BKSW	2015-11	12,884	7.50	310
BKSW	2015-12	12,649	7.50	290
BKSW	2016-1	13,470	7.25	298
BKSW	2016-2	13,438	7.00	350
BKSW	2016-3	13,085	6.75	345
BKSW	2016-4	13,158	6.75	348

BANK	TAHUN	KURS	SUKU BUNGA	HARGA SAHAM
BKSW	2016-5	13,252	6.75	348
BKSW	2016-6	13,183	6.50	328
BKSW	2016-7	13,366	6.50	406
BKSW	2016-8	13,568	5.25	350
BKSW	2016-9	13,265	5.00	350
BKSW	2016-10	13,250	4.75	346
BKSW	2016-11	13,421	4.75	362
BKSW	2016-12	13,854	4.75	320
BKSW	2017-1	13,624	4.75	256
BKSW	2017-2	13,592	4.75	308
BKSW	2017-3	13,594	4.75	390
BKSW	2017-4	13,370	4.75	448
BKSW	2017-5	13,409	4.75	470
BKSW	2017-6	13,409	4.75	450
BKSW	2017-7	13,365	4.75	245
BKSW	2017-8	13,390	4.50	220
BKSW	2017-9	13,373	4.25	216
BKSW	2017-10	13,413	4.25	234
BKSW	2017-11	13,408	4.25	208
BKSW	2017-12	13,426	4.25	240
BMAS	2015-1	13,926	7.75	390
BMAS	2015-2	13,747	7.50	338
BMAS	2015-3	13,904	7.50	338
BMAS	2015-4	14,471	7.50	348
BMAS	2015-5	13,851	7.50	328
BMAS	2015-6	13,432	7.50	328
BMAS	2015-7	13,387	7.50	370
BMAS	2015-8	13,220	7.50	360
BMAS	2015-9	13,007	7.50	350
BMAS	2015-10	13,133	7.50	360
BMAS	2015-11	12,884	7.50	360
BMAS	2015-12	12,649	7.50	400
BMAS	2016-1	13,470	7.25	452
BMAS	2016-2	13,438	7.00	460
BMAS	2016-3	13,085	6.75	470
BMAS	2016-4	13,158	6.75	405
BMAS	2016-5	13,252	6.75	350
BMAS	2016-6	13,183	6.50	374
BMAS	2016-7	13,366	6.50	304

BANK	TAHUN	KURS	SUKU BUNGA	HARGA SAHAM
BMAS	2016-8	13,568	5.25	300
BMAS	2016-9	13,265	5.00	358
BMAS	2016-10	13,250	4.75	380
BMAS	2016-11	13,421	4.75	380
BMAS	2016-12	13,854	4.75	420
BMAS	2017-1	13,624	4.75	400
BMAS	2017-2	13,592	4.75	390
BMAS	2017-3	13,594	4.75	438
BMAS	2017-4	13,370	4.75	420
BMAS	2017-5	13,409	4.75	396
BMAS	2017-6	13,409	4.75	444
BMAS	2017-7	13,365	4.75	398
BMAS	2017-8	13,390	4.50	458
BMAS	2017-9	13,373	4.25	364
BMAS	2017-10	13,413	4.25	358
BMAS	2017-11	13,408	4.25	350
BMAS	2017-12	13,426	4.25	392
BMRI	2015-1	13,926	7.75	11,000
BMRI	2015-2	13,747	7.50	12,000
BMRI	2015-3	13,904	7.50	12,475
BMRI	2015-4	14,471	7.50	10,750
BMRI	2015-5	13,851	7.50	10,775
BMRI	2015-6	13,432	7.50	10,050
BMRI	2015-7	13,387	7.50	9,525
BMRI	2015-8	13,220	7.50	9,100
BMRI	2015-9	13,007	7.50	7,925
BMRI	2015-10	13,133	7.50	8,700
BMRI	2015-11	12,884	7.50	8,500
BMRI	2015-12	12,649	7.50	9,250
BMRI	2016-1	13,470	7.25	9,600
BMRI	2016-2	13,438	7.00	9,550
BMRI	2016-3	13,085	6.75	9,300
BMRI	2016-4	13,158	6.75	9,650
BMRI	2016-5	13,252	6.75	9,025
BMRI	2016-6	13,183	6.50	9,525
BMRI	2016-7	13,366	6.50	10,100
BMRI	2016-8	13,568	5.25	11,225
BMRI	2016-9	13,265	5.00	11,200
BMRI	2016-10	13,250	4.75	11,475

BANK	TAHUN	KURS	SUKU BUNGA	HARGA SAHAM
BMRI	2016-11	13,421	4.75	10,500
BMRI	2016-12	13,854	4.75	11,575
BMRI	2017-1	13,624	4.75	10,900
BMRI	2017-2	13,592	4.75	11,300
BMRI	2017-3	13,594	4.75	11,700
BMRI	2017-4	13,370	4.75	11,700
BMRI	2017-5	13,409	4.75	12,600
BMRI	2017-6	13,409	4.75	12,750
BMRI	2017-7	13,365	4.75	13,650
BMRI	2017-8	13,390	4.50	13,100
BMRI	2017-9	13,373	4.25	6,725
BMRI	2017-10	13,413	4.25	7,050
BMRI	2017-11	13,408	4.25	7,400
BMRI	2017-12	13,426	4.25	8,000
BNBA	2015-1	13,926	7.75	163
BNBA	2015-2	13,747	7.50	161
BNBA	2015-3	13,904	7.50	165
BNBA	2015-4	14,471	7.50	154
BNBA	2015-5	13,851	7.50	160
BNBA	2015-6	13,432	7.50	172
BNBA	2015-7	13,387	7.50	173
BNBA	2015-8	13,220	7.50	179
BNBA	2015-9	13,007	7.50	177
BNBA	2015-10	13,133	7.50	175
BNBA	2015-11	12,884	7.50	193
BNBA	2015-12	12,649	7.50	190
BNBA	2016-1	13,470	7.25	183
BNBA	2016-2	13,438	7.00	197
BNBA	2016-3	13,085	6.75	181
BNBA	2016-4	13,158	6.75	191
BNBA	2016-5	13,252	6.75	190
BNBA	2016-6	13,183	6.50	195
BNBA	2016-7	13,366	6.50	199
BNBA	2016-8	13,568	5.25	200
BNBA	2016-9	13,265	5.00	194
BNBA	2016-10	13,250	4.75	199
BNBA	2016-11	13,421	4.75	190
BNBA	2016-12	13,854	4.75	200
BNBA	2017-1	13,624	4.75	222

BANK	TAHUN	KURS	SUKU BUNGA	HARGA SAHAM
BNBA	2017-2	13,592	4.75	224
BNBA	2017-3	13,594	4.75	236
BNBA	2017-4	13,370	4.75	260
BNBA	2017-5	13,409	4.75	240
BNBA	2017-6	13,409	4.75	260
BNBA	2017-7	13,365	4.75	250
BNBA	2017-8	13,390	4.50	238
BNBA	2017-9	13,373	4.25	242
BNBA	2017-10	13,413	4.25	238
BNBA	2017-11	13,408	4.25	268
BNBA	2017-12	13,426	4.25	268
BNGA	2015-1	13,926	7.75	835
BNGA	2015-2	13,747	7.50	795
BNGA	2015-3	13,904	7.50	800
BNGA	2015-4	14,471	7.50	685
BNGA	2015-5	13,851	7.50	720
BNGA	2015-6	13,432	7.50	675
BNGA	2015-7	13,387	7.50	650
BNGA	2015-8	13,220	7.50	447
BNGA	2015-9	13,007	7.50	540
BNGA	2015-10	13,133	7.50	665
BNGA	2015-11	12,884	7.50	695
BNGA	2015-12	12,649	7.50	595
BNGA	2016-1	13,470	7.25	605
BNGA	2016-2	13,438	7.00	570
BNGA	2016-3	13,085	6.75	575
BNGA	2016-4	13,158	6.75	550
BNGA	2016-5	13,252	6.75	495
BNGA	2016-6	13,183	6.50	525
BNGA	2016-7	13,366	6.50	910
BNGA	2016-8	13,568	5.25	835
BNGA	2016-9	13,265	5.00	830
BNGA	2016-10	13,250	4.75	955
BNGA	2016-11	13,421	4.75	805
BNGA	2016-12	13,854	4.75	845
BNGA	2017-1	13,624	4.75	980
BNGA	2017-2	13,592	4.75	990
BNGA	2017-3	13,594	4.75	1,040
BNGA	2017-4	13,370	4.75	1,270

BANK	TAHUN	KURS	SUKU BUNGA	HARGA SAHAM
BNGA	2017-5	13,409	4.75	1,280
BNGA	2017-6	13,409	4.75	1,170
BNGA	2017-7	13,365	4.75	1,290
BNGA	2017-8	13,390	4.50	1,385
BNGA	2017-9	13,373	4.25	1,295
BNGA	2017-10	13,413	4.25	1,240
BNGA	2017-11	13,408	4.25	1,220
BNGA	2017-12	13,426	4.25	1,350
BNII	2015-1	13,926	7.75	203
BNII	2015-2	13,747	7.50	202
BNII	2015-3	13,904	7.50	195
BNII	2015-4	14,471	7.50	194
BNII	2015-5	13,851	7.50	195
BNII	2015-6	13,432	7.50	182
BNII	2015-7	13,387	7.50	190
BNII	2015-8	13,220	7.50	170
BNII	2015-9	13,007	7.50	152
BNII	2015-10	13,133	7.50	165
BNII	2015-11	12,884	7.50	178
BNII	2015-12	12,649	7.50	171
BNII	2016-1	13,470	7.25	162
BNII	2016-2	13,438	7.00	175
BNII	2016-3	13,085	6.75	163
BNII	2016-4	13,158	6.75	213
BNII	2016-5	13,252	6.75	193
BNII	2016-6	13,183	6.50	266
BNII	2016-7	13,366	6.50	410
BNII	2016-8	13,568	5.25	366
BNII	2016-9	13,265	5.00	340
BNII	2016-10	13,250	4.75	366
BNII	2016-11	13,421	4.75	354
BNII	2016-12	13,854	4.75	340
BNII	2017-1	13,624	4.75	352
BNII	2017-2	13,592	4.75	352
BNII	2017-3	13,594	4.75	338
BNII	2017-4	13,370	4.75	340
BNII	2017-5	13,409	4.75	320
BNII	2017-6	13,409	4.75	310
BNII	2017-7	13,365	4.75	314

BANK	TAHUN	KURS	SUKU BUNGA	HARGA SAHAM
BNII	2017-8	13,390	4.50	306
BNII	2017-9	13,373	4.25	296
BNII	2017-10	13,413	4.25	304
BNII	2017-11	13,408	4.25	294
BNII	2017-12	13,426	4.25	264
BNLI	2015-1	13,926	7.75	1,550
BNLI	2015-2	13,747	7.50	1,640
BNLI	2015-3	13,904	7.50	1,605
BNLI	2015-4	14,471	7.50	1,610
BNLI	2015-5	13,851	7.50	1,620
BNLI	2015-6	13,432	7.50	1,600
BNLI	2015-7	13,387	7.50	1,550
BNLI	2015-8	13,220	7.50	1,280
BNLI	2015-9	13,007	7.50	1,130
BNLI	2015-10	13,133	7.50	1,100
BNLI	2015-11	12,884	7.50	1,100
BNLI	2015-12	12,649	7.50	945
BNLI	2016-1	13,470	7.25	670
BNLI	2016-2	13,438	7.00	630
BNLI	2016-3	13,085	6.75	670
BNLI	2016-4	13,158	6.75	900
BNLI	2016-5	13,252	6.75	585
BNLI	2016-6	13,183	6.50	705
BNLI	2016-7	13,366	6.50	685
BNLI	2016-8	13,568	5.25	660
BNLI	2016-9	13,265	5.00	610
BNLI	2016-10	13,250	4.75	575
BNLI	2016-11	13,421	4.75	555
BNLI	2016-12	13,854	4.75	555
BNLI	2017-1	13,624	4.75	675
BNLI	2017-2	13,592	4.75	700
BNLI	2017-3	13,594	4.75	670
BNLI	2017-4	13,370	4.75	695
BNLI	2017-5	13,409	4.75	685
BNLI	2017-6	13,409	4.75	690
BNLI	2017-7	13,365	4.75	705
BNLI	2017-8	13,390	4.50	720
BNLI	2017-9	13,373	4.25	705
BNLI	2017-10	13,413	4.25	650

BANK	TAHUN	KURS	SUKU BUNGA	HARGA SAHAM
BNLI	2017-11	13,408	4.25	620
BNLI	2017-12	13,426	4.25	625
BSIM	2015-1	13,926	7.75	347
BSIM	2015-2	13,747	7.50	393
BSIM	2015-3	13,904	7.50	406
BSIM	2015-4	14,471	7.50	400
BSIM	2015-5	13,851	7.50	385
BSIM	2015-6	13,432	7.50	375
BSIM	2015-7	13,387	7.50	385
BSIM	2015-8	13,220	7.50	370
BSIM	2015-9	13,007	7.50	490
BSIM	2015-10	13,133	7.50	485
BSIM	2015-11	12,884	7.50	450
BSIM	2015-12	12,649	7.50	394
BSIM	2016-1	13,470	7.25	430
BSIM	2016-2	13,438	7.00	500
BSIM	2016-3	13,085	6.75	490
BSIM	2016-4	13,158	6.75	405
BSIM	2016-5	13,252	6.75	430
BSIM	2016-6	13,183	6.50	530
BSIM	2016-7	13,366	6.50	800
BSIM	2016-8	13,568	5.25	810
BSIM	2016-9	13,265	5.00	800
BSIM	2016-10	13,250	4.75	870
BSIM	2016-11	13,421	4.75	855
BSIM	2016-12	13,854	4.75	870
BSIM	2017-1	13,624	4.75	860
BSIM	2017-2	13,592	4.75	860
BSIM	2017-3	13,594	4.75	880
BSIM	2017-4	13,370	4.75	865
BSIM	2017-5	13,409	4.75	800
BSIM	2017-6	13,409	4.75	815
BSIM	2017-7	13,365	4.75	850
BSIM	2017-8	13,390	4.50	870
BSIM	2017-9	13,373	4.25	890
BSIM	2017-10	13,413	4.25	900
BSIM	2017-11	13,408	4.25	875
BSIM	2017-12	13,426	4.25	880
BSWD	2015-1	13,926	7.75	2,565

BANK	TAHUN	KURS	SUKU BUNGA	HARGA SAHAM
BSWD	2015-2	13,747	7.50	2,565
BSWD	2015-3	13,904	7.50	5,350
BSWD	2015-4	14,471	7.50	3,600
BSWD	2015-5	13,851	7.50	2,635
BSWD	2015-6	13,432	7.50	1,450
BSWD	2015-7	13,387	7.50	2,900
BSWD	2015-8	13,220	7.50	3,350
BSWD	2015-9	13,007	7.50	4,420
BSWD	2015-10	13,133	7.50	4,330
BSWD	2015-11	12,884	7.50	3,850
BSWD	2015-12	12,649	7.50	3,595
BSWD	2016-1	13,470	7.25	3,365
BSWD	2016-2	13,438	7.00	3,090
BSWD	2016-3	13,085	6.75	2,890
BSWD	2016-4	13,158	6.75	2,490
BSWD	2016-5	13,252	6.75	2,450
BSWD	2016-6	13,183	6.50	2,240
BSWD	2016-7	13,366	6.50	1,740
BSWD	2016-8	13,568	5.25	2,040
BSWD	2016-9	13,265	5.00	2,080
BSWD	2016-10	13,250	4.75	2,000
BSWD	2016-11	13,421	4.75	1,975
BSWD	2016-12	13,854	4.75	2,050
BSWD	2017-1	13,624	4.75	2,050
BSWD	2017-2	13,592	4.75	2,440
BSWD	2017-3	13,594	4.75	2,340
BSWD	2017-4	13,370	4.75	2,340
BSWD	2017-5	13,409	4.75	1,535
BSWD	2017-6	13,409	4.75	2,200
BSWD	2017-7	13,365	4.75	1,600
BSWD	2017-8	13,390	4.50	1,890
BSWD	2017-9	13,373	4.25	1,600
BSWD	2017-10	13,413	4.25	1,795
BSWD	2017-11	13,408	4.25	1,853
BSWD	2017-12	13,426	4.25	1,735
BTPN	2015-1	13,926	7.75	4,000
BTPN	2015-2	13,747	7.50	4,205
BTPN	2015-3	13,904	7.50	4,220
BTPN	2015-4	14,471	7.50	3,950



BANK	TAHUN	KURS	SUKU BUNGA	HARGA SAHAM
BTPN	2015-5	13,851	7.50	3,860
BTPN	2015-6	13,432	7.50	3,425
BTPN	2015-7	13,387	7.50	3,150
BTPN	2015-8	13,220	7.50	2,950
BTPN	2015-9	13,007	7.50	2,910
BTPN	2015-10	13,133	7.50	2,615
BTPN	2015-11	12,884	7.50	2,615
BTPN	2015-12	12,649	7.50	2,400
BTPN	2016-1	13,470	7.25	2,150
BTPN	2016-2	13,438	7.00	2,840
BTPN	2016-3	13,085	6.75	2,800
BTPN	2016-4	13,158	6.75	2,680
BTPN	2016-5	13,252	6.75	2,600
BTPN	2016-6	13,183	6.50	2,470
BTPN	2016-7	13,366	6.50	2,360
BTPN	2016-8	13,568	5.25	2,670
BTPN	2016-9	13,265	5.00	2,560
BTPN	2016-10	13,250	4.75	2,870
BTPN	2016-11	13,421	4.75	2,830
BTPN	2016-12	13,854	4.75	2,640
BTPN	2017-1	13,624	4.75	2,580
BTPN	2017-2	13,592	4.75	2,830
BTPN	2017-3	13,594	4.75	2,730
BTPN	2017-4	13,370	4.75	2,610
BTPN	2017-5	13,409	4.75	2,490
BTPN	2017-6	13,409	4.75	2,480
BTPN	2017-7	13,365	4.75	2,520
BTPN	2017-8	13,390	4.50	2,550
BTPN	2017-9	13,373	4.25	2,550
BTPN	2017-10	13,413	4.25	2,550
BTPN	2017-11	13,408	4.25	2,440
BTPN	2017-12	13,426	4.25	2,460
BVIC	2015-1	13,926	7.75	120
BVIC	2015-2	13,747	7.50	120
BVIC	2015-3	13,904	7.50	120
BVIC	2015-4	14,471	7.50	118
BVIC	2015-5	13,851	7.50	118
BVIC	2015-6	13,432	7.50	117
BVIC	2015-7	13,387	7.50	115

BANK	TAHUN	KURS	SUKU BUNGA	HARGA SAHAM
BVIC	2015-8	13,220	7.50	101
BVIC	2015-9	13,007	7.50	93
BVIC	2015-10	13,133	7.50	112
BVIC	2015-11	12,884	7.50	110
BVIC	2015-12	12,649	7.50	105
BVIC	2016-1	13,470	7.25	105
BVIC	2016-2	13,438	7.00	103
BVIC	2016-3	13,085	6.75	110
BVIC	2016-4	13,158	6.75	102
BVIC	2016-5	13,252	6.75	104
BVIC	2016-6	13,183	6.50	103
BVIC	2016-7	13,366	6.50	112
BVIC	2016-8	13,568	5.25	102
BVIC	2016-9	13,265	5.00	99
BVIC	2016-10	13,250	4.75	92
BVIC	2016-11	13,421	4.75	96
BVIC	2016-12	13,854	4.75	107
BVIC	2017-1	13,624	4.75	105
BVIC	2017-2	13,592	4.75	115
BVIC	2017-3	13,594	4.75	113
BVIC	2017-4	13,370	4.75	128
BVIC	2017-5	13,409	4.75	258
BVIC	2017-6	13,409	4.75	294
BVIC	2017-7	13,365	4.75	278
BVIC	2017-8	13,390	4.50	226
BVIC	2017-9	13,373	4.25	204
BVIC	2017-10	13,413	4.25	202
BVIC	2017-11	13,408	4.25	248
BVIC	2017-12	13,426	4.25	236
DNAR	2015-1	13,926	7.75	159
DNAR	2015-2	13,747	7.50	162
DNAR	2015-3	13,904	7.50	160
DNAR	2015-4	14,471	7.50	148
DNAR	2015-5	13,851	7.50	144
DNAR	2015-6	13,432	7.50	128
DNAR	2015-7	13,387	7.50	149
DNAR	2015-8	13,220	7.50	125
DNAR	2015-9	13,007	7.50	126
DNAR	2015-10	13,133	7.50	116

BANK	TAHUN	KURS	SUKU BUNGA	HARGA SAHAM
DNAR	2015-11	12,884	7.50	112
DNAR	2015-12	12,649	7.50	113
DNAR	2016-1	13,470	7.25	165
DNAR	2016-2	13,438	7.00	101
DNAR	2016-3	13,085	6.75	122
DNAR	2016-4	13,158	6.75	115
DNAR	2016-5	13,252	6.75	134
DNAR	2016-6	13,183	6.50	145
DNAR	2016-7	13,366	6.50	150
DNAR	2016-8	13,568	5.25	156
DNAR	2016-9	13,265	5.00	155
DNAR	2016-10	13,250	4.75	151
DNAR	2016-11	13,421	4.75	230
DNAR	2016-12	13,854	4.75	240
DNAR	2017-1	13,624	4.75	290
DNAR	2017-2	13,592	4.75	230
DNAR	2017-3	13,594	4.75	316
DNAR	2017-4	13,370	4.75	350
DNAR	2017-5	13,409	4.75	278
DNAR	2017-6	13,409	4.75	284
DNAR	2017-7	13,365	4.75	276
DNAR	2017-8	13,390	4.50	280
DNAR	2017-9	13,373	4.25	280
DNAR	2017-10	13,413	4.25	280
DNAR	2017-11	13,408	4.25	272
DNAR	2017-12	13,426	4.25	280
INPC	2015-1	13,926	7.75	79
INPC	2015-2	13,747	7.50	80
INPC	2015-3	13,904	7.50	76
INPC	2015-4	14,471	7.50	72
INPC	2015-5	13,851	7.50	78
INPC	2015-6	13,432	7.50	75
INPC	2015-7	13,387	7.50	76
INPC	2015-8	13,220	7.50	67
INPC	2015-9	13,007	7.50	69
INPC	2015-10	13,133	7.50	64
INPC	2015-11	12,884	7.50	67
INPC	2015-12	12,649	7.50	64
INPC	2016-1	13,470	7.25	70

BANK	TAHUN	KURS	SUKU BUNGA	HARGA SAHAM
INPC	2016-2	13,438	7.00	69
INPC	2016-3	13,085	6.75	79
INPC	2016-4	13,158	6.75	74
INPC	2016-5	13,252	6.75	74
INPC	2016-6	13,183	6.50	81
INPC	2016-7	13,366	6.50	98
INPC	2016-8	13,568	5.25	98
INPC	2016-9	13,265	5.00	93
INPC	2016-10	13,250	4.75	90
INPC	2016-11	13,421	4.75	110
INPC	2016-12	13,854	4.75	73
INPC	2017-1	13,624	4.75	114
INPC	2017-2	13,592	4.75	108
INPC	2017-3	13,594	4.75	90
INPC	2017-4	13,370	4.75	95
INPC	2017-5	13,409	4.75	96
INPC	2017-6	13,409	4.75	94
INPC	2017-7	13,365	4.75	93
INPC	2017-8	13,390	4.50	90
INPC	2017-9	13,373	4.25	89
INPC	2017-10	13,413	4.25	87
INPC	2017-11	13,408	4.25	94
INPC	2017-12	13,426	4.25	80
MAYA	2015-1	13,926	7.75	1,165
MAYA	2015-2	13,747	7.50	1,650
MAYA	2015-3	13,904	7.50	1,525
MAYA	2015-4	14,471	7.50	1,480
MAYA	2015-5	13,851	7.50	1,570
MAYA	2015-6	13,432	7.50	1,750
MAYA	2015-7	13,387	7.50	1,645
MAYA	2015-8	13,220	7.50	1,645
MAYA	2015-9	13,007	7.50	1,480
MAYA	2015-10	13,133	7.50	1,420
MAYA	2015-11	12,884	7.50	1,930
MAYA	2015-12	12,649	7.50	1,950
MAYA	2016-1	13,470	7.25	1,995
MAYA	2016-2	13,438	7.00	1,865
MAYA	2016-3	13,085	6.75	1,560
MAYA	2016-4	13,158	6.75	1,650

BANK	TAHUN	KURS	SUKU BUNGA	HARGA SAHAM
MAYA	2016-5	13,252	6.75	1,670
MAYA	2016-6	13,183	6.50	1,520
MAYA	2016-7	13,366	6.50	1,700
MAYA	2016-8	13,568	5.25	2,220
MAYA	2016-9	13,265	5.00	3
MAYA	2016-10	13,250	4.75	3,150
MAYA	2016-11	13,421	4.75	3,500
MAYA	2016-12	13,854	4.75	3,150
MAYA	2017-1	13,624	4.75	3,000
MAYA	2017-2	13,592	4.75	2,650
MAYA	2017-3	13,594	4.75	2,650
MAYA	2017-4	13,370	4.75	2,750
MAYA	2017-5	13,409	4.75	2,800
MAYA	2017-6	13,409	4.75	3,120
MAYA	2017-7	13,365	4.75	3,400
MAYA	2017-8	13,390	4.50	3,450
MAYA	2017-9	13,373	4.25	3,210
MAYA	2017-10	13,413	4.25	3,800
MAYA	2017-11	13,408	4.25	3,990
MAYA	2017-12	13,426	4.25	3,850
MCOR	2015-1	13,926	7.75	223
MCOR	2015-2	13,747	7.50	258
MCOR	2015-3	13,904	7.50	275
MCOR	2015-4	14,471	7.50	274
MCOR	2015-5	13,851	7.50	265
MCOR	2015-6	13,432	7.50	298
MCOR	2015-7	13,387	7.50	276
MCOR	2015-8	13,220	7.50	303
MCOR	2015-9	13,007	7.50	280
MCOR	2015-10	13,133	7.50	349
MCOR	2015-11	12,884	7.50	300
MCOR	2015-12	12,649	7.50	300
MCOR	2016-1	13,470	7.25	295
MCOR	2016-2	13,438	7.00	288
MCOR	2016-3	13,085	6.75	289
MCOR	2016-4	13,158	6.75	260
MCOR	2016-5	13,252	6.75	276
MCOR	2016-6	13,183	6.50	200
MCOR	2016-7	13,366	6.50	159

BANK	TAHUN	KURS	SUKU BUNGA	HARGA SAHAM
MCOR	2016-8	13,568	5.25	179
MCOR	2016-9	13,265	5.00	193
MCOR	2016-10	13,250	4.75	176
MCOR	2016-11	13,421	4.75	170
MCOR	2016-12	13,854	4.75	148
MCOR	2017-1	13,624	4.75	199
MCOR	2017-2	13,592	4.75	318
MCOR	2017-3	13,594	4.75	294
MCOR	2017-4	13,370	4.75	254
MCOR	2017-5	13,409	4.75	274
MCOR	2017-6	13,409	4.75	274
MCOR	2017-7	13,365	4.75	234
MCOR	2017-8	13,390	4.50	230
MCOR	2017-9	13,373	4.25	206
MCOR	2017-10	13,413	4.25	206
MCOR	2017-11	13,408	4.25	216
MCOR	2017-12	13,426	4.25	214
MEGA	2015-1	13,926	7.75	1,970
MEGA	2015-2	13,747	7.50	1,970
MEGA	2015-3	13,904	7.50	2,450
MEGA	2015-4	14,471	7.50	2,200
MEGA	2015-5	13,851	7.50	2,200
MEGA	2015-6	13,432	7.50	2,500
MEGA	2015-7	13,387	7.50	2,615
MEGA	2015-8	13,220	7.50	3,300
MEGA	2015-9	13,007	7.50	3,450
MEGA	2015-10	13,133	7.50	3,100
MEGA	2015-11	12,884	7.50	3,050
MEGA	2015-12	12,649	7.50	3,275
MEGA	2016-1	13,470	7.25	2,930
MEGA	2016-2	13,438	7.00	2,975
MEGA	2016-3	13,085	6.75	2,800
MEGA	2016-4	13,158	6.75	2,775
MEGA	2016-5	13,252	6.75	3,300
MEGA	2016-6	13,183	6.50	3,550
MEGA	2016-7	13,366	6.50	3,270
MEGA	2016-8	13,568	5.25	3,170
MEGA	2016-9	13,265	5.00	3,000
MEGA	2016-10	13,250	4.75	3,000

BANK	TAHUN	KURS	SUKU BUNGA	HARGA SAHAM
MEGA	2016-11	13,421	4.75	2,600
MEGA	2016-12	13,854	4.75	2,550
MEGA	2017-1	13,624	4.75	2,550
MEGA	2017-2	13,592	4.75	2,180
MEGA	2017-3	13,594	4.75	3,000
MEGA	2017-4	13,370	4.75	3,010
MEGA	2017-5	13,409	4.75	3,000
MEGA	2017-6	13,409	4.75	3,000
MEGA	2017-7	13,365	4.75	3,000
MEGA	2017-8	13,390	4.50	2,950
MEGA	2017-9	13,373	4.25	30,000
MEGA	2017-10	13,413	4.25	2,950
MEGA	2017-11	13,408	4.25	2,850
MEGA	2017-12	13,426	4.25	3,340
NAGA	2015-1	13,926	7.75	160
NAGA	2015-2	13,747	7.50	190
NAGA	2015-3	13,904	7.50	190
NAGA	2015-4	14,471	7.50	126
NAGA	2015-5	13,851	7.50	131
NAGA	2015-6	13,432	7.50	144
NAGA	2015-7	13,387	7.50	128
NAGA	2015-8	13,220	7.50	104
NAGA	2015-9	13,007	7.50	110
NAGA	2015-10	13,133	7.50	130
NAGA	2015-11	12,884	7.50	180
NAGA	2015-12	12,649	7.50	212
NAGA	2016-1	13,470	7.25	225
NAGA	2016-2	13,438	7.00	180
NAGA	2016-3	13,085	6.75	180
NAGA	2016-4	13,158	6.75	200
NAGA	2016-5	13,252	6.75	210
NAGA	2016-6	13,183	6.50	192
NAGA	2016-7	13,366	6.50	216
NAGA	2016-8	13,568	5.25	197
NAGA	2016-9	13,265	5.00	202
NAGA	2016-10	13,250	4.75	185
NAGA	2016-11	13,421	4.75	193
NAGA	2016-12	13,854	4.75	200
NAGA	2017-1	13,624	4.75	151

BANK	TAHUN	KURS	SUKU BUNGA	HARGA SAHAM
NAGA	2017-2	13,592	4.75	159
NAGA	2017-3	13,594	4.75	165
NAGA	2017-4	13,370	4.75	174
NAGA	2017-5	13,409	4.75	165
NAGA	2017-6	13,409	4.75	378
NAGA	2017-7	13,365	4.75	234
NAGA	2017-8	13,390	4.50	222
NAGA	2017-9	13,373	4.25	234
NAGA	2017-10	13,413	4.25	228
NAGA	2017-11	13,408	4.25	191
NAGA	2017-12	13,426	4.25	260
NISP	2015-1	13,926	7.75	1,325
NISP	2015-2	13,747	7.50	1,330
NISP	2015-3	13,904	7.50	1,400
NISP	2015-4	14,471	7.50	1,300
NISP	2015-5	13,851	7.50	1,300
NISP	2015-6	13,432	7.50	1,240
NISP	2015-7	13,387	7.50	1,250
NISP	2015-8	13,220	7.50	1,390
NISP	2015-9	13,007	7.50	1,225
NISP	2015-10	13,133	7.50	1,245
NISP	2015-11	12,884	7.50	1,350
NISP	2015-12	12,649	7.50	1,275
NISP	2016-1	13,470	7.25	1,275
NISP	2016-2	13,438	7.00	1,325
NISP	2016-3	13,085	6.75	1,185
NISP	2016-4	13,158	6.75	1,335
NISP	2016-5	13,252	6.75	1,280
NISP	2016-6	13,183	6.50	1,225
NISP	2016-7	13,366	6.50	1,315
NISP	2016-8	13,568	5.25	1,204
NISP	2016-9	13,265	5.00	1,675
NISP	2016-10	13,250	4.75	1,690
NISP	2016-11	13,421	4.75	1,750
NISP	2016-12	13,854	4.75	2,070
NISP	2017-1	13,624	4.75	1,810
NISP	2017-2	13,592	4.75	1,810
NISP	2017-3	13,594	4.75	1,870
NISP	2017-4	13,370	4.75	1,800

BANK	TAHUN	KURS	SUKU BUNGA	HARGA SAHAM
NISP	2017-5	13,409	4.75	1,750
NISP	2017-6	13,409	4.75	1,800
NISP	2017-7	13,365	4.75	1,900
NISP	2017-8	13,390	4.50	1,875
NISP	2017-9	13,373	4.25	1,865
NISP	2017-10	13,413	4.25	1,916
NISP	2017-11	13,408	4.25	2,000
NISP	2017-12	13,426	4.25	1,875
NOBU	2015-1	13,926	7.75	745
NOBU	2015-2	13,747	7.50	735
NOBU	2015-3	13,904	7.50	815
NOBU	2015-4	14,471	7.50	770
NOBU	2015-5	13,851	7.50	770
NOBU	2015-6	13,432	7.50	750
NOBU	2015-7	13,387	7.50	760
NOBU	2015-8	13,220	7.50	745
NOBU	2015-9	13,007	7.50	735
NOBU	2015-10	13,133	7.50	715
NOBU	2015-11	12,884	7.50	580
NOBU	2015-12	12,649	7.50	452
NOBU	2016-1	13,470	7.25	600
NOBU	2016-2	13,438	7.00	600
NOBU	2016-3	13,085	6.75	498
NOBU	2016-4	13,158	6.75	475
NOBU	2016-5	13,252	6.75	450
NOBU	2016-6	13,183	6.50	446
NOBU	2016-7	13,366	6.50	458
NOBU	2016-8	13,568	5.25	452
NOBU	2016-9	13,265	5.00	448
NOBU	2016-10	13,250	4.75	498
NOBU	2016-11	13,421	4.75	490
NOBU	2016-12	13,854	4.75	760
NOBU	2017-1	13,624	4.75	835
NOBU	2017-2	13,592	4.75	895
NOBU	2017-3	13,594	4.75	890
NOBU	2017-4	13,370	4.75	910
NOBU	2017-5	13,409	4.75	910
NOBU	2017-6	13,409	4.75	900
NOBU	2017-7	13,365	4.75	880

BANK	TAHUN	KURS	SUKU BUNGA	HARGA SAHAM
NOBU	2017-8	13,390	4.50	875
NOBU	2017-9	13,373	4.25	890
NOBU	2017-10	13,413	4.25	905
NOBU	2017-11	13,408	4.25	925
NOBU	2017-12	13,426	4.25	960
PNBN	2015-1	13,926	7.75	1,060
PNBN	2015-2	13,747	7.50	1,100
PNBN	2015-3	13,904	7.50	1,425
PNBN	2015-4	14,471	7.50	1,300
PNBN	2015-5	13,851	7.50	1,250
PNBN	2015-6	13,432	7.50	1,100
PNBN	2015-7	13,387	7.50	1,065
PNBN	2015-8	13,220	7.50	1,075
PNBN	2015-9	13,007	7.50	885
PNBN	2015-10	13,133	7.50	930
PNBN	2015-11	12,884	7.50	865
PNBN	2015-12	12,649	7.50	820
PNBN	2016-1	13,470	7.25	685
PNBN	2016-2	13,438	7.00	575
PNBN	2016-3	13,085	6.75	700
PNBN	2016-4	13,158	6.75	785
PNBN	2016-5	13,252	6.75	695
PNBN	2016-6	13,183	6.50	770
PNBN	2016-7	13,366	6.50	780
PNBN	2016-8	13,568	5.25	905
PNBN	2016-9	13,265	5.00	825
PNBN	2016-10	13,250	4.75	800
PNBN	2016-11	13,421	4.75	735
PNBN	2016-12	13,854	4.75	750
PNBN	2017-1	13,624	4.75	825
PNBN	2017-2	13,592	4.75	890
PNBN	2017-3	13,594	4.75	905
PNBN	2017-4	13,370	4.75	915
PNBN	2017-5	13,409	4.75	935
PNBN	2017-6	13,409	4.75	975
PNBN	2017-7	13,365	4.75	1,085
PNBN	2017-8	13,390	4.50	1,070
PNBN	2017-9	13,373	4.25	1,140
PNBN	2017-10	13,413	4.25	1,090

BANK	TAHUN	KURS	SUKU BUNGA	HARGA SAHAM
PNBN	2017-11	13,408	4.25	1,330
PNBN	2017-12	13,426	4.25	1,140
PNBS	2015-1	13,926	7.75	187
PNBS	2015-2	13,747	7.50	193
PNBS	2015-3	13,904	7.50	223
PNBS	2015-4	14,471	7.50	266
PNBS	2015-5	13,851	7.50	276
PNBS	2015-6	13,432	7.50	265
PNBS	2015-7	13,387	7.50	270
PNBS	2015-8	13,220	7.50	252
PNBS	2015-9	13,007	7.50	224
PNBS	2015-10	13,133	7.50	232
PNBS	2015-11	12,884	7.50	242
PNBS	2015-12	12,649	7.50	250
PNBS	2016-1	13,470	7.25	236
PNBS	2016-2	13,438	7.00	220
PNBS	2016-3	13,085	6.75	218
PNBS	2016-4	13,158	6.75	202
PNBS	2016-5	13,252	6.75	196
PNBS	2016-6	13,183	6.50	210
PNBS	2016-7	13,366	6.50	212
PNBS	2016-8	13,568	5.25	216
PNBS	2016-9	13,265	5.00	199
PNBS	2016-10	13,250	4.75	169
PNBS	2016-11	13,421	4.75	146
PNBS	2016-12	13,854	4.75	120
PNBS	2017-1	13,624	4.75	109
PNBS	2017-2	13,592	4.75	104
PNBS	2017-3	13,594	4.75	113
PNBS	2017-4	13,370	4.75	116
PNBS	2017-5	13,409	4.75	117
PNBS	2017-6	13,409	4.75	140
PNBS	2017-7	13,365	4.75	111
PNBS	2017-8	13,390	4.50	101
PNBS	2017-9	13,373	4.25	100
PNBS	2017-10	13,413	4.25	94
PNBS	2017-11	13,408	4.25	77
PNBS	2017-12	13,426	4.25	65
SDRA	2015-1	13,926	7.75	1,150

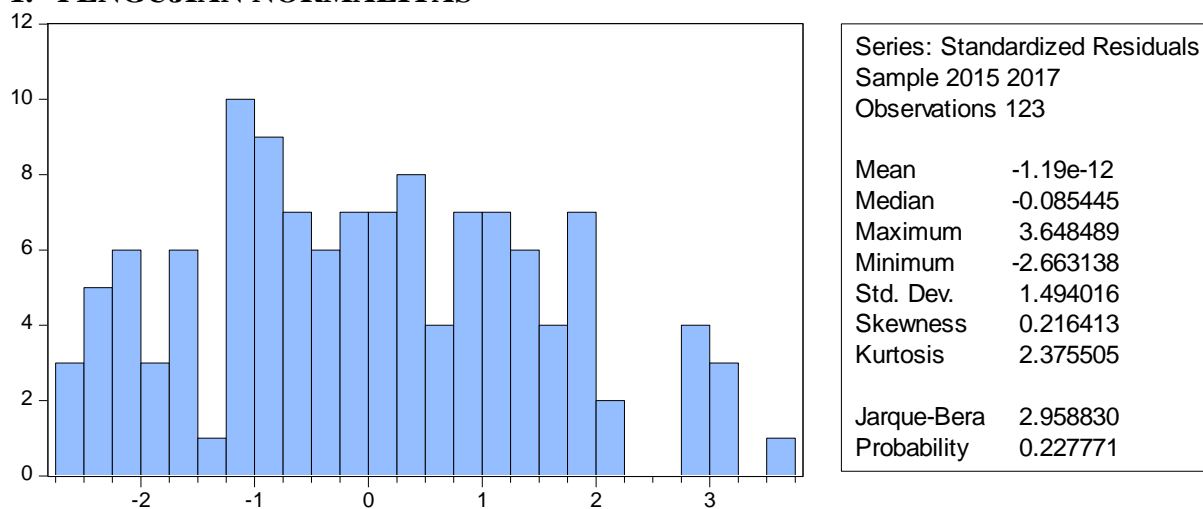
BANK	TAHUN	KURS	SUKU BUNGA	HARGA SAHAM
SDRA	2015-2	13,747	7.50	1,100
SDRA	2015-3	13,904	7.50	1,150
SDRA	2015-4	14,471	7.50	1,195
SDRA	2015-5	13,851	7.50	1,190
SDRA	2015-6	13,432	7.50	1,195
SDRA	2015-7	13,387	7.50	1,195
SDRA	2015-8	13,220	7.50	1,155
SDRA	2015-9	13,007	7.50	1,190
SDRA	2015-10	13,133	7.50	1,160
SDRA	2015-11	12,884	7.50	1,150
SDRA	2015-12	12,649	7.50	1,100
SDRA	2016-1	13,470	7.25	1,120
SDRA	2016-2	13,438	7.00	1,170
SDRA	2016-3	13,085	6.75	1,200
SDRA	2016-4	13,158	6.75	1,200
SDRA	2016-5	13,252	6.75	950
SDRA	2016-6	13,183	6.50	910
SDRA	2016-7	13,366	6.50	1,150
SDRA	2016-8	13,568	5.25	1,190
SDRA	2016-9	13,265	5.00	1,150
SDRA	2016-10	13,250	4.75	1,150
SDRA	2016-11	13,421	4.75	1,150
SDRA	2016-12	13,854	4.75	1,150
SDRA	2017-1	13,624	4.75	1,150
SDRA	2017-2	13,592	4.75	1,100
SDRA	2017-3	13,594	4.75	1,050
SDRA	2017-4	13,370	4.75	1,050
SDRA	2017-5	13,409	4.75	1,095
SDRA	2017-6	13,409	4.75	1,085
SDRA	2017-7	13,365	4.75	900
SDRA	2017-8	13,390	4.50	800
SDRA	2017-9	13,373	4.25	780
SDRA	2017-10	13,413	4.25	955
SDRA	2017-11	13,408	4.25	900
SDRA	2017-12	13,426	4.25	890

**LAMPIRAN 3: STATISTIK DESKRIPTIF**

	HARGA_SAHAM	KURS	SUKU_BUNGA
Mean	1881.039	13424.85	6.027778
Median	587.5000	13408.33	6.500000
Maximum	30000.00	14470.89	7.750000
Minimum	0.000000	12649.24	4.250000
Std. Dev.	3414.571	320.9564	1.336099
Skewness	3.120387	0.649262	-0.048557
Kurtosis	13.89210	4.994589	1.205001
Jarque-Bera Probability	9691.482 0.000000	348.3699 0.000000	198.7344 0.000000
Sum	2776413.	19815082	8897.000
Sum Sq. Dev.	1.72E+10	1.52E+08	2633.111
Observations	1476	1476	1476

## LAMPIRAN 4: ASUMSI KLASIK

### 1. PENGUJIAN NORMALITAS



### 2. MULTIKOLINEARITAS

#### A. Nilai Tukar

Dependent Variable: LN\_KURS  
 Method: Panel Least Squares  
 Date: 02/12/19 Time: 06:08  
 Sample: 2015M01 2017M12  
 Periods included: 36  
 Cross-sections included: 41  
 Total panel (balanced) observations: 1476

Variable	Coefficient	Std. Error	t-Statistic	Prob.
C	9.511807	0.004912	1936.406	0.0000
LN_SUKU_BUNGA	-0.004081	0.002751	-1.483500	0.1382

#### Effects Specification

Cross-section fixed (dummy variables)

R-squared	0.001532	Mean dependent var	9.504580
Adjusted R-squared	-0.027015	S.D. dependent var	0.023750
S.E. of regression	0.024069	Akaike info criterion	-4.587751
Sum squared resid	0.830732	Schwarz criterion	-4.437021
Log likelihood	3427.760	Hannan-Quinn criter.	-4.531553
F-statistic	0.053677	Durbin-Watson stat	0.681477
Prob(F-statistic)	1.000000		

#### Perhitungan VIF Nilai Tukar:

$$VIF = 1 / (1 - R^2)$$

$$VIF = 1 / (1 - 0.001532)$$

$$VIF = 1 / (0.998468)$$

$$VIF = 1.002$$



**B. Tingkat Suku Bunga**

Dependent Variable: LN\_SUKU\_BUNGA

Method: Panel Least Squares

Date: 02/12/19 Time: 06:07

Sample: 2015M01 2017M12

Periods included: 36

Cross-sections included: 41

Total panel (balanced) observations: 1476

Variable	Coefficient	Std. Error	t-Statistic	Prob.
C	5.339404	2.405484	2.219680	0.0266
LN_KURS	-0.375453	0.253086	-1.483500	0.1382

## Effects Specification

Cross-section fixed (dummy variables)

R-squared	0.001532	Mean dependent var	1.770879
Adjusted R-squared	-0.027015	S.D. dependent var	0.227795
S.E. of regression	0.230851	Akaike info criterion	-0.066046
Sum squared resid	76.42102	Schwarz criterion	0.084685
Log likelihood	90.74161	Hannan-Quinn criter.	-0.009848
F-statistic	0.053677	Durbin-Watson stat	0.034751
Prob(F-statistic)	1.000000		

**Perhitungan VIF Tingkat Suku Bunga:**

$$VIF=1/(1-R^2)$$

$$VIF=1/(1-0.001532)$$

$$VIF=1/(0.998468)$$

$$VIF=1,002$$

**3. AUTOKORELASI**

Dependent Variable: LN\_HARGA\_SAHAM

Method: Panel Least Squares

Date: 02/12/19 Time: 05:55

Sample: 2015M01 2017M12

Periods included: 36

Cross-sections included: 41

Total panel (unbalanced) observations: 1469

F-statistic	555.4230	Durbin-Watson stat	0.873083
Prob(F-statistic)	0.000000		

#### 4. HETEROKEDASTISITAS

---

Dependent Variable: ABS\_RES  
 Method: Panel Least Squares  
 Date: 02/12/19 Time: 06:06  
 Sample: 2015M01 2017M12  
 Periods included: 36  
 Cross-sections included: 41  
 Total panel (balanced) observations: 1476

---

Variable	Coefficient	Std. Error	t-Statistic	Prob.
C	-6.055854	2.897877	-2.089756	0.0368
LN_KURS	0.685135	0.304603	2.249272	0.0246
LN_SUKU_BUNGA	-0.126549	0.031758	-3.984757	0.0001
R-squared	0.014500	Mean dependent var		0.231959
Adjusted R-squared	0.013162	S.D. dependent var		0.279474
S.E. of regression	0.277629	Akaike info criterion		0.276967
Sum squared resid	113.5355	Schwarz criterion		0.287733
Log likelihood	-201.4014	Hannan-Quinn criter.		0.280981
F-statistic	10.83622	Durbin-Watson stat		1.177805
Prob(F-statistic)	0.000021			

---

## LAMPIRAN 5: PENGUJIAN PEMILIHAN MODEL DAN REGRESI

### 1. UJI CHOW

Redundant Fixed Effects Tests

Equation: Untitled

Test cross-section fixed effects

Effects Test	Statistic	d.f.	Prob.
Cross-section F	580.612235	(40,1426)	0.0000
Cross-section Chi-square	4186.537523	40	0.0000

Cross-section fixed effects test equation:

Dependent Variable: LN\_HARGA\_SAHAM

Method: Panel Least Squares

Date: 02/12/19 Time: 05:54

Sample: 2015M01 2017M12

Periods included: 36

Cross-sections included: 41

Total panel (unbalanced) observations: 1469

### 2. PENGUJIAN REGRESI

Dependent Variable: LN\_HARGA\_SAHAM

Method: Panel Least Squares

Date: 02/12/19 Time: 05:55

Sample: 2015M01 2017M12

Periods included: 36

Cross-sections included: 41

Total panel (unbalanced) observations: 1469

Variable	Coefficient	Std. Error	t-Statistic	Prob.
C	-4.078871	3.879331	-1.051437	0.2932
LN_KURS	1.184034	0.407708	2.904123	0.0037
LN_SUKU_BUNGA	-0.428451	0.042369	-10.11240	0.0000

Effects Specification

Cross-section fixed (dummy variables)

R-squared	0.942393	Mean dependent var	6.416485
Adjusted R-squared	0.940696	S.D. dependent var	1.515031
S.E. of regression	0.368947	Akaike info criterion	0.872506
Sum squared resid	194.1097	Schwarz criterion	1.027422
Log likelihood	-597.8559	Hannan-Quinn criter.	0.930278
F-statistic	555.4230	Durbin-Watson stat	0.873083
Prob(F-statistic)	0.000000		